

IDH2 RABBIT MAB

Cat.#: N262383

Product Name: Anti-IDH2 Rabbit Monoclonal Antibody

Synonyms: IDH; IDP; IDHM; IDPM; ICD-M; D2HGA2; mNADP-IDH

UNIPROT ID: P48735

Background: Plays a role in intermediary metabolism and energy production. It may tightly associate or interact with the pyruvate dehydrogenase complex.

Immunogen: A synthetic peptide of human IDH2

Applications: WB,IHC-P

Recommended Dilutions: WB: 1/500-1/1000 IHC: 1/50-1/100

Host Species: Rabbit

Clonality: Rabbit Monoclonal

Clone ID: R01-7E4

MW: Calculated MW: 51 kDa; Observed MW: 43 kDa

Isotype: IgG

Purification: Affinity Purified

Species Reactivity: Human,Mouse,Rat

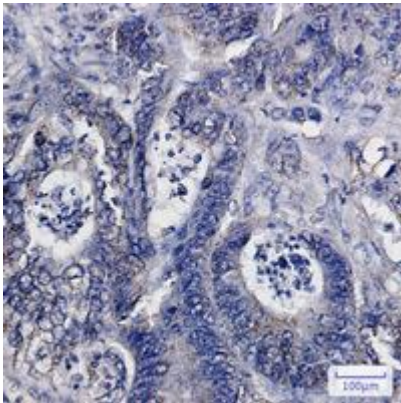
Conjugation: Unconjugated

Modification: Unmodified

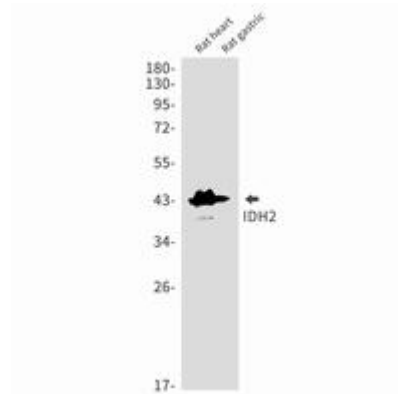
Constituents: PBS (without Mg²⁺ and Ca²⁺), pH 7.3 containing 50% glycerol, 0.5% BSA and 0.02% sodium azide

Research Areas: Signal Transduction

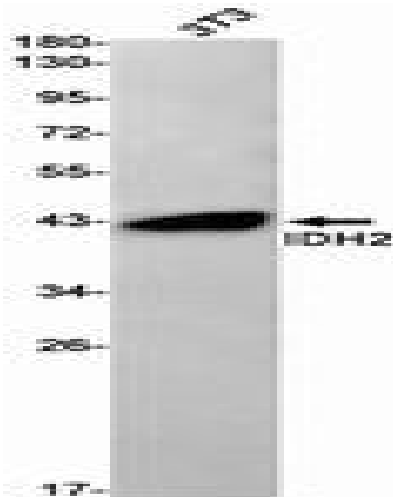
Storage & Shipping: Store at -20°C. Avoid repeated freezing and thawing



Immunohistochemistry analysis of paraffin-embedded Human colon cancer using IDH2 antibody. High-pressure and temperature Sodium Citrate pH 6.0 was used for antigen retrieval.



Western blot analysis of IDH2 in rat heart, rat gastric lysates using IDH2 antibody.



Western blot analysis of IDH2 in 3T3 lysates using IDH2 antibody.