

IDO2 RABBIT PAB

Cat.#: S218122

Product Name: Anti-IDO2 Rabbit Polyclonal Antibody

Synonyms: INDOL1

UNIPROT ID: Q6ZQW0 (Gene Accession - BC113496)

Background: Along with the enzymes encoded by the INDO (MIM 147435) and TDO2 (MIM 191070) genes, the enzyme encoded by the INDOL1 gene metabolizes tryptophan in the kynurenine pathway.

Immunogen: Fusion protein of human IDO2

Applications: ELISA, WB, IHC

Recommended Dilutions: IHC: 50-200;WB: 500-2000;ELISA: 5000-10000

Host Species: Rabbit

Clonality: Rabbit Polyclonal

Isotype: Immunogen-specific rabbit IgG

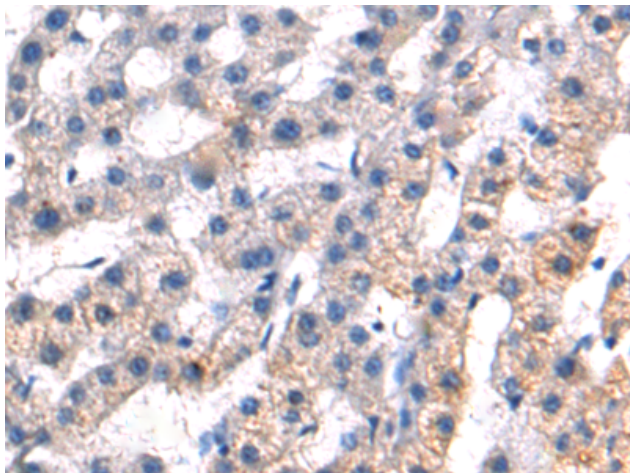
Purification: Antigen affinity purification

Species Reactivity: Human, Mouse

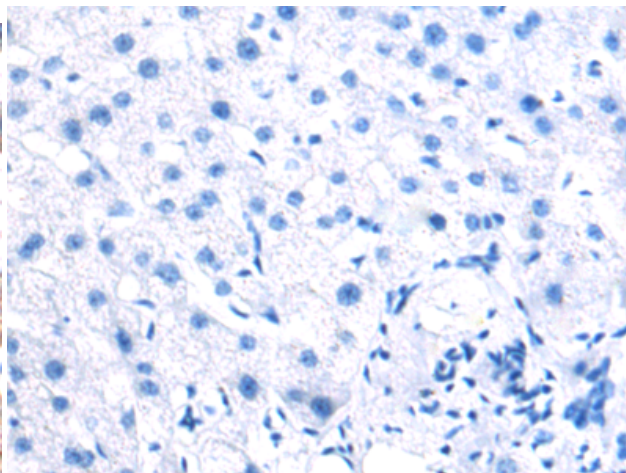
Constituents: PBS (without Mg²⁺ and Ca²⁺), pH 7.4, 150 mM NaCl, 0.05% Sodium Azide and 40% glycerol

Research Areas: Metabolism

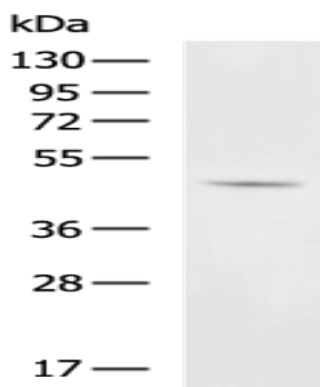
Storage & Shipping: Store at -20°C. Avoid repeated freezing and thawing



Immunohistochemistry analysis of paraffin embedded Human liver cancer tissue using 218122(IDO2 Antibody) at a dilution of 1/90(Cytoplasm).



In comparison with the IHC on the left, the same paraffin-embedded Human liver cancer tissue is first treated with the fusion protein and then with 218122(Anti-IDO2 Antibody) at dilution 1/90.



Gel: 8%SDS-PAGE, Lysate: 40 μ g;
Lane: Mouse kidney tissue lysate;
Primary antibody: 218122(IDO2 Antibody) at dilution 1/1350;
Secondary antibody: HRP-conjugated Goat anti rabbit IgG at 1/5000 dilution;
Exposure time: 1 minute