

## IFI27 RABBIT PAB

**Cat.#:** S219189

**Product Name:** Anti-IFI27 Rabbit Polyclonal Antibody

**Synonyms:** P27; ISG12; FAM14D; ISG12A

**UNIPROT ID:** P40305 (Gene Accession - BC015492 )

**Background:** Promotes cell death. Mediates IFN-induced apoptosis characterized by a rapid and robust release of cytochrome C from the mitochondria and activation of BAX and caspases 2, 3, 6, 8 and 9.

**Immunogen:** Fusion protein of human IFI27

**Applications:** ELISA, IHC

**Recommended Dilutions:** IHC: 100-200; ELISA: 5000-10000

**Host Species:** Rabbit

**Clonality:** Rabbit Polyclonal

**Isotype:** Immunogen-specific rabbit IgG

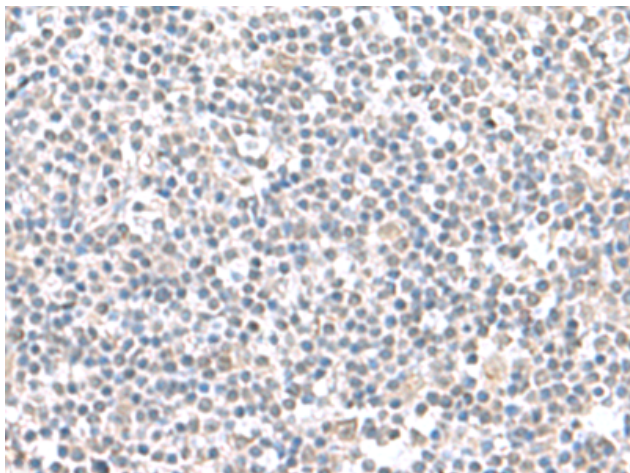
**Purification:** Antigen affinity purification

**Species Reactivity:** Human

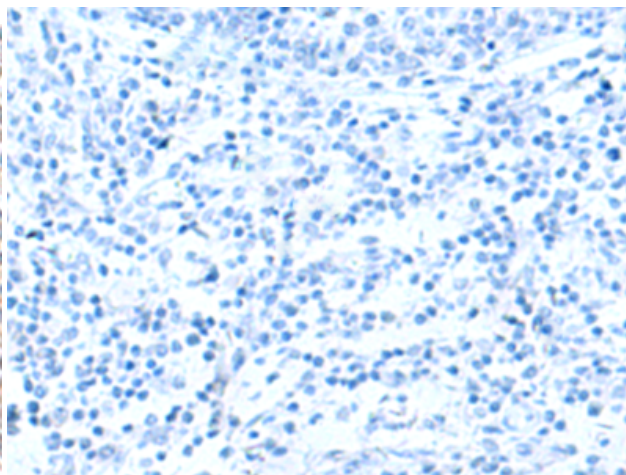
**Constituents:** PBS (without Mg<sup>2+</sup> and Ca<sup>2+</sup>), pH 7.4, 150 mM NaCl, 0.05% Sodium Azide and 40% glycerol

**Research Areas:** Immunology

**Storage & Shipping:** Store at -20°C. Avoid repeated freezing and thawing



Immunohistochemistry analysis of paraffin embedded Human tonsil tissue using 219189(IFI27 Antibody) at a dilution of 1/100(Cytoplasm).



In comparison with the IHC on the left, the same paraffin-embedded Human tonsil tissue is first treated with the fusion protein and then with 219189(Anti-IFI27 Antibody) at dilution 1/100.