

IFIT3 RABBIT PAB

Cat.#: S218738

Product Name: Anti-IFIT3 Rabbit Polyclonal Antibody

Synonyms: P60; IRG2; IFI60; IFIT4; ISG60; RIG-G; cig41; CIG-49; GARG-49

UNIPROT ID: O14879 (Gene Accession - BC001383)

Background: IFN-induced antiviral protein which acts as an inhibitor of cellular as well as viral processes, cell migration, proliferation, signaling, and viral replication. Enhances MAVS-mediated host antiviral responses by serving as an adapter bridging TBK1 to MAVS which leads to the activation of TBK1 and phosphorylation of IRF3 and phosphorylated IRF3 translocates into nucleus to promote antiviral gene transcription. Exhibits an antiproliferative activity via the up-regulation of cell cycle negative regulators CDKN1A/p21 and CDKN1B/p27. Normally, CDKN1B/p27 turnover is regulated by COPS5, which binds CDKN1B/p27 in the nucleus and exports it to the cytoplasm for ubiquitin-dependent degradation. IFIT3 sequesters COPS5 in the cytoplasm, thereby increasing nuclear CDKN1B/p27 protein levels. Upregulates CDKN1A/p21 by downregulating MYC, a repressor of CDKN1A/p21. Can negatively regulate the apoptotic effects of IFIT2.

Immunogen: Fusion protein of human IFIT3

Applications: ELISA, WB, IHC

Recommended Dilutions: IHC: 20-100;WB: 200-1000;ELISA: 5000-10000

Host Species: Rabbit

Clonality: Rabbit Polyclonal

Isotype: Immunogen-specific rabbit IgG

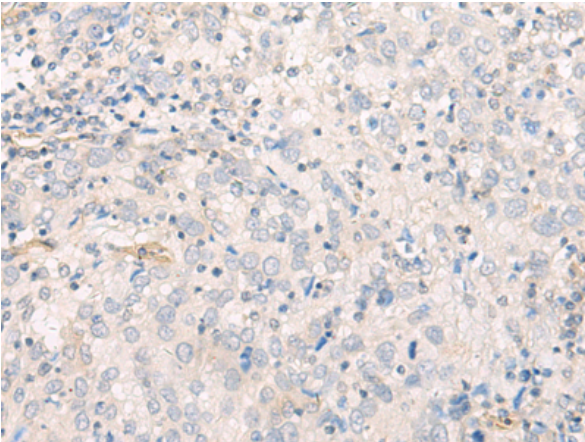
Purification: Antigen affinity purification

Species Reactivity: Human

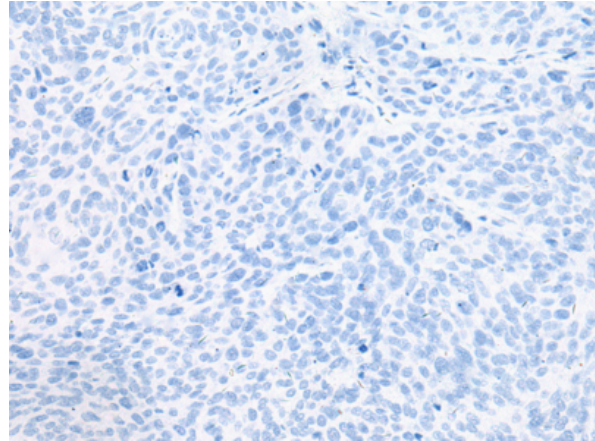
Constituents: PBS (without Mg²⁺ and Ca²⁺), pH 7.4, 150 mM NaCl, 0.05% Sodium Azide and 40% glycerol

Research Areas: Immunology

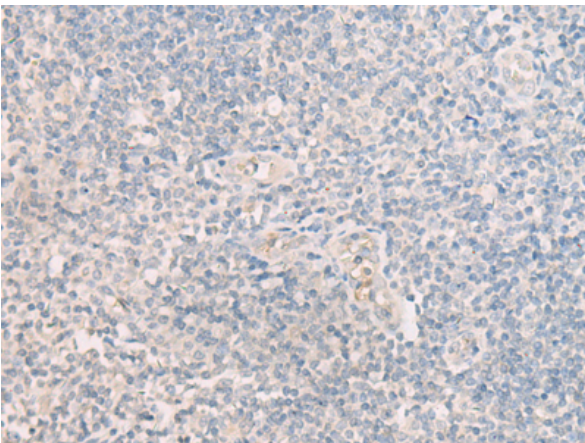
Storage & Shipping: Store at -20°C. Avoid repeated freezing and thawing



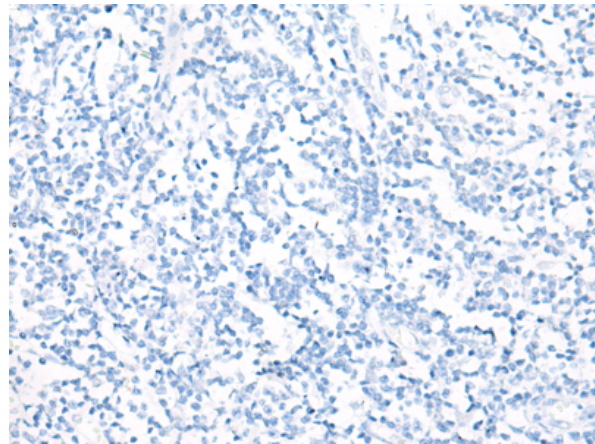
Immunohistochemistry analysis of paraffin embedded Human cervical cancer tissue using 218738 (IFIT3 Antibody) at a dilution of 1/20 (Cytoplasm).



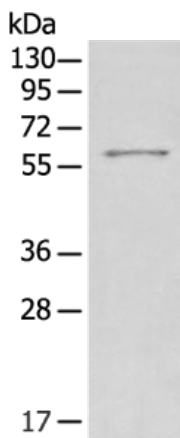
In comparison with the IHC on the left, the same paraffin-embedded Human cervical cancer tissue is first treated with the fusion protein and then with 218738 (Anti-IFIT3 Antibody) at dilution 1/20.



The image on the left is immunohistochemistry of paraffin-embedded Human tonsil tissue using 218738 (Anti-IFIT3 Antibody) at a dilution of 1/20.



In comparison with the IHC on the left, the same paraffin-embedded Human tonsil tissue is first treated with fusion protein and then with D225086 (Anti-IFIT3 Antibody) at dilution 1/20.



Gel: 8% SDS-PAGE, Lysate: 40 µg;
Lane: HEPG2 cell lysate;
Primary antibody: 218738 (IFIT3 Antibody) at dilution 1/250;
Secondary antibody: Goat anti rabbit IgG at 1/8000 dilution;
Exposure time: 10 seconds



Product Description

Pioneering GTPase and Oncogene Product Development since 2010
