

## IFNA1/IFNA13 RABBIT PAB

**Cat.#:** S222271

**Product Name:** Anti-IFNA1/IFNA13 Rabbit Polyclonal Antibody

**Synonyms:**

**UNIPROT ID:** P01562 (Gene Accession - NP\_008831 )

**Background:** Produced by macrophages, IFN-alpha have antiviral activities. Interferon stimulates the production of two enzymes: a protein kinase and an oligoadenylate synthetase.

**Immunogen:** Synthetic peptide of human IFNA1/IFNA13

**Applications:** ELISA, IHC

**Recommended Dilutions:** IHC: 30-150; ELISA: 5000-10000

**Host Species:** Rabbit

**Clonality:** Rabbit Polyclonal

**Isotype:** Immunogen-specific rabbit IgG

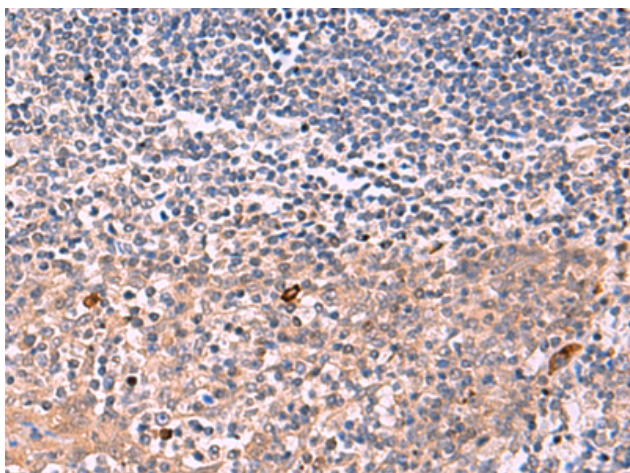
**Purification:** Antigen affinity purification

**Species Reactivity:** Human

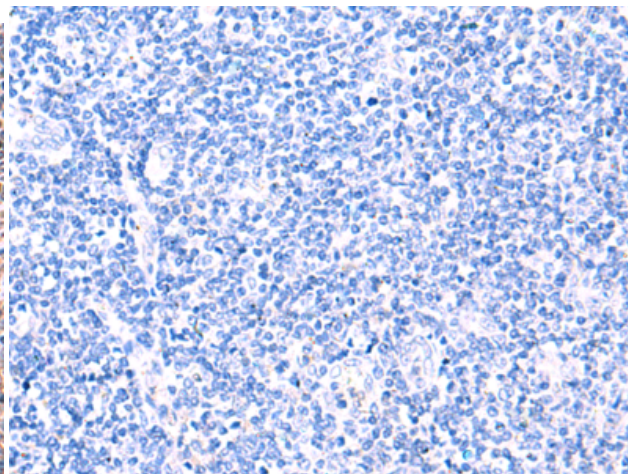
**Constituents:** PBS (without Mg<sup>2+</sup> and Ca<sup>2+</sup>), pH 7.4, 150 mM NaCl, 0.05% Sodium Azide and 40% glycerol

**Research Areas:** Immunology

**Storage & Shipping:** Store at -20°C. Avoid repeated freezing and thawing



Immunohistochemistry analysis of paraffin embedded Human tonsil tissue using 222271(IFNA1/IFNA13 Antibody) at a dilution of 1/35(Cytoplasm).



In comparison with the IHC on the left, the same paraffin-embedded Human tonsil tissue is first treated with the synthetic peptide and then with 222271(Anti-IFNA1/IFNA13 Antibody) at dilution 1/35.