

IFNA13 RABBIT PAB

Cat.#: S218714

Product Name: Anti-IFNA13 Rabbit Polyclonal Antibody

Synonyms:

UNIPROT ID: P01562 (Gene Accession - ??)

Background: Predicted to enable cytokine activity and type I interferon receptor binding activity. Predicted to be involved in several processes, including B cell activation; lymphocyte activation involved in immune response; and positive regulation of peptidyl-serine phosphorylation of STAT protein. Predicted to be located in extracellular region. Predicted to be active in extracellular space.

Immunogen: Fusion protein of human IFNA13

Applications: ELISA, WB, IHC

Recommended Dilutions: IHC: 50-200;WB: 1000-5000;ELISA: 5000-10000

Host Species: Rabbit

Clonality: Rabbit Polyclonal

Isotype: Immunogen-specific rabbit IgG

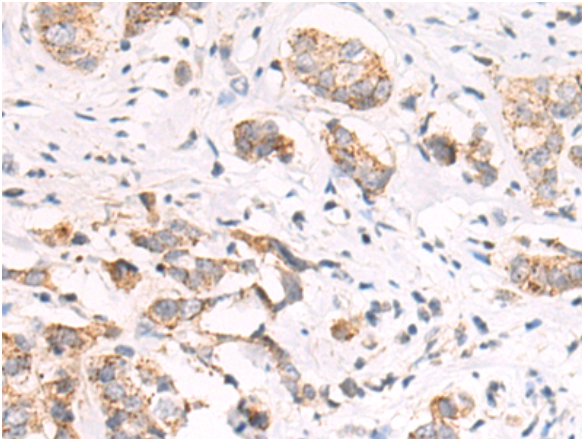
Purification: Antigen affinity purification

Species Reactivity: Human, Mouse

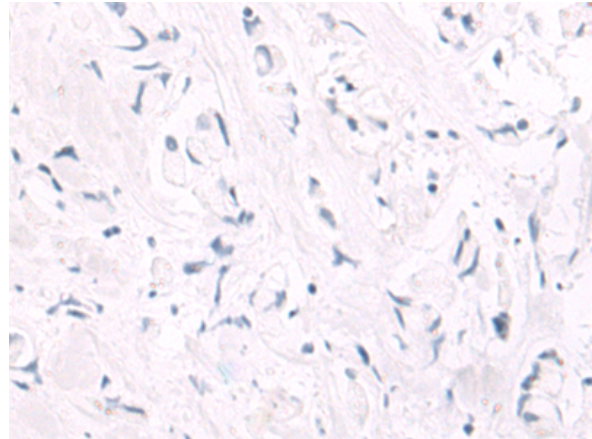
Constituents: PBS (without Mg²⁺ and Ca²⁺), pH 7.4, 150 mM NaCl, 0.05% Sodium Azide and 40% glycerol

Research Areas: Immunology, Cancer, Neuroscience

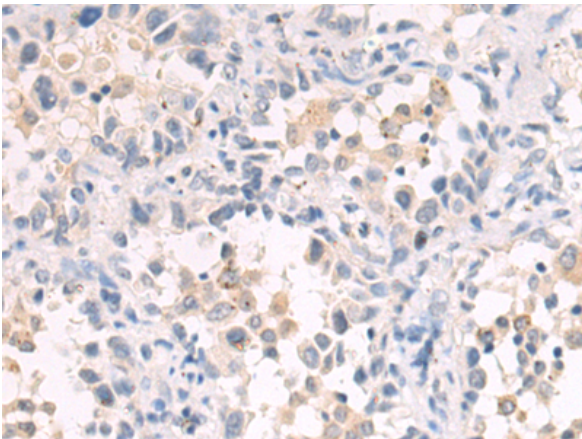
Storage & Shipping: Store at -20°C. Avoid repeated freezing and thawing



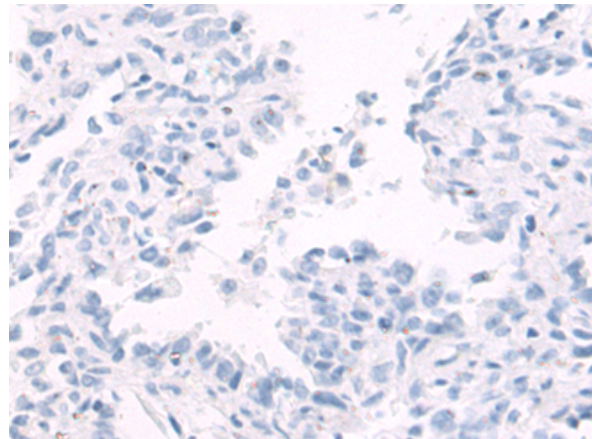
Immunohistochemistry analysis of paraffin embedded Human breast cancer tissue using 218714(IFNA13 Antibody) at a dilution of 1/80 (Secreted).



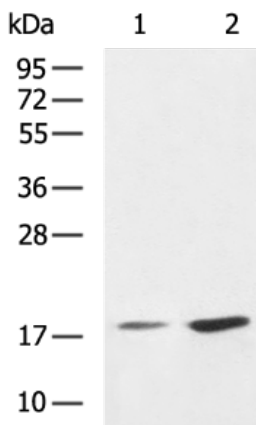
In comparison with the IHC on the left, the same paraffin-embedded Human breast cancer tissue is first treated with the fusion protein and then with 218714 (Anti-IFNA13 Antibody) at dilution 1/80.



The image on the left is immunohistochemistry of paraffin-embedded Human thyroid cancer tissue using 218714 (Anti-IFNA13 Antibody) at a dilution of 1/80.



In comparison with the IHC on the left, the same paraffin-embedded Human thyroid cancer tissue is first treated with fusion protein and then with D225047 (Anti-IFNA13 Antibody) at dilution 1/80.



Gel: 12% SDS-PAGE, Lysate: 40 µg;
 Lane 1-2: Mouse fetal liver tissue, 293T cell lysates;
 Primary antibody: 218714 (IFNA13 Antibody) at dilution 1/1200;
 Secondary antibody: HRP-conjugated Goat anti rabbit IgG at 1/5000 dilution;
 Exposure time: 30 seconds



Product Description

Pioneering GTPase and Oncogene Product Development since 2010
