

IFNW1 RABBIT PAB

Cat.#: S218114

Product Name: Anti-IFNW1 Rabbit Polyclonal Antibody

Synonyms:

UNIPROT ID: P05000 (Gene Accession - BC117290)

Background: The protein encoded by this gene is an interferon and possesses antiviral activity. The encoded protein binds to the interferon alpha/beta receptor but not to the interferon gamma receptor. This intronless gene has several pseudogenes spread throughout the genome.

Immunogen: Fusion protein of human IFNW1

Applications: ELISA, IHC

Recommended Dilutions: IHC: 200-400; ELISA: 5000-10000

Host Species: Rabbit

Clonality: Rabbit Polyclonal

Isotype: Immunogen-specific rabbit IgG

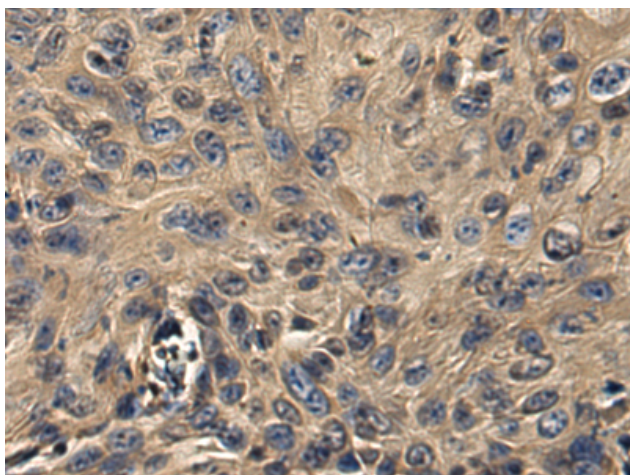
Purification: Antigen affinity purification

Species Reactivity: Human

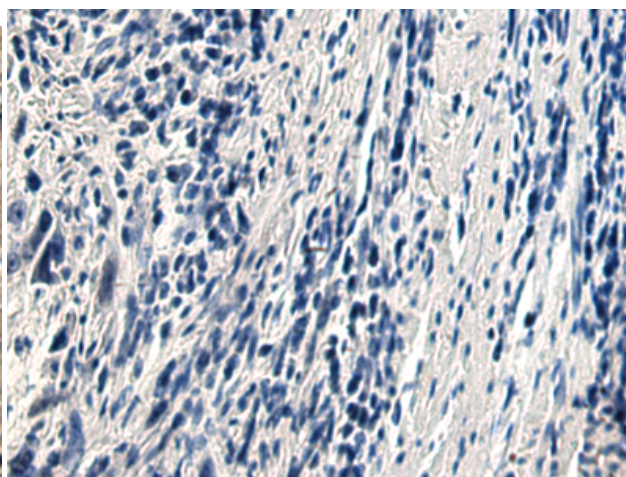
Constituents: PBS (without Mg²⁺ and Ca²⁺), pH 7.4, 150 mM NaCl, 0.05% Sodium Azide and 40% glycerol

Research Areas: Immunology

Storage & Shipping: Store at -20°C. Avoid repeated freezing and thawing



Immunohistochemistry analysis of paraffin embedded Human esophagus cancer tissue using 218114(IFNW1 Antibody) at a dilution of 1/220(Secreted).



In comparison with the IHC on the left, the same paraffin-embedded Human esophagus cancer tissue is first treated with the fusion protein and then with 218114(Anti-IFNW1 Antibody) at dilution 1/220.