

IFRD2 RABBIT PAB

Cat.#: S218699

Product Name: Anti-IFRD2 Rabbit Polyclonal Antibody

Synonyms: SM15; IFNRP; SKMC15

UNIPROT ID: Q12894 (Gene Accession - BC001676)

Background: IFRD2 (Interferon-related developmental regulator 2), also known as SKMC15, is a 442 amino acid soluble nuclear protein. IFRD2 is ubiquitously expressed and contains a β -catenin-like repeat, which may indicate an involvement in APC signaling. With 75% homology to IFRD1, IFRD2 may also regulate expression of surface adhesion molecules involved in differentiation and fusion of myogenic satellite cells. Although the gene encoding IFRD2 undergoes overlapping homozygous deletions in many lung cancer cell lines, IFRD2 exhibits no loss-of-function mutations in cancer cells, suggesting a possible role in tumor progression.

Immunogen: Fusion protein of human IFRD2

Applications: ELISA, IHC

Recommended Dilutions: IHC: 25-100; ELISA: 5000-10000

Host Species: Rabbit

Clonality: Rabbit Polyclonal

Isotype: Immunogen-specific rabbit IgG

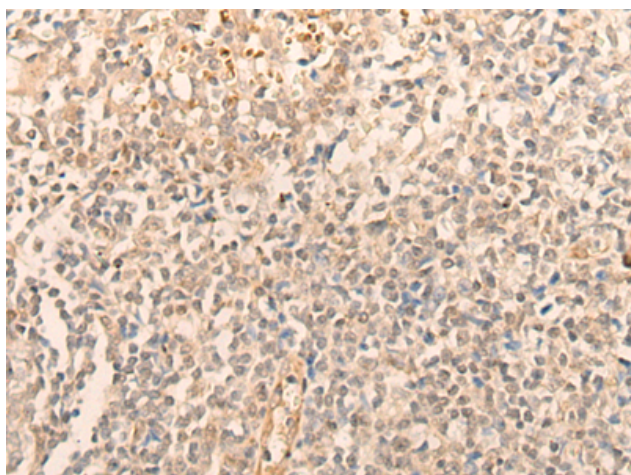
Purification: Antigen affinity purification

Species Reactivity: Human

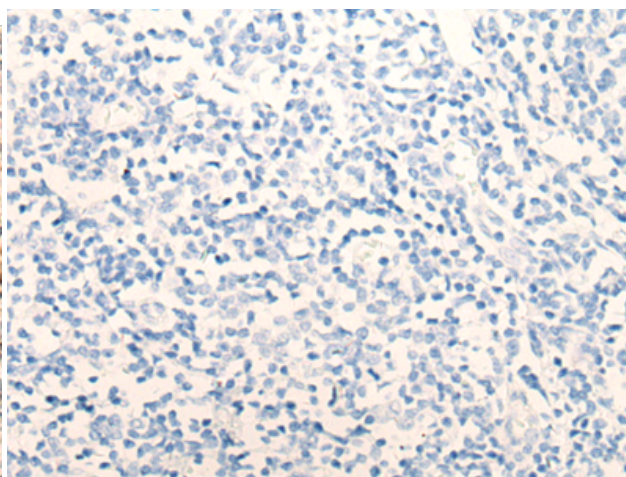
Constituents: PBS (without Mg²⁺ and Ca²⁺), pH 7.4, 150 mM NaCl, 0.05% Sodium Azide and 40% glycerol

Research Areas: Cancer

Storage & Shipping: Store at -20°C. Avoid repeated freezing and thawing



Immunohistochemistry analysis of paraffin embedded Human tonsil tissue using 218699(IFRD2 Antibody) at a dilution of 1/20(Nucleus).



In comparison with the IHC on the left, the same paraffin-embedded Human tonsil tissue is first treated with the fusion protein and then with 218699(Anti-IFRD2 Antibody) at dilution 1/20.