

## IFT22 RABBIT PAB

**Cat.#:** S218996

**Product Name:** Anti-IFT22 Rabbit Polyclonal Antibody

**Synonyms:** RABL5

**UNIPROT ID:** Q9H7X7 (Gene Accession - BC009823 )

**Background:** Small GTPase-like component of the intraflagellar transport (IFT) complex B.

**Immunogen:** Fusion protein of human IFT22

**Applications:** ELISA, WB, IHC

**Recommended Dilutions:** IHC: 50-300;WB: 200-1000;ELISA: 5000-10000

**Host Species:** Rabbit

**Clonality:** Rabbit Polyclonal

**Isotype:** Immunogen-specific rabbit IgG

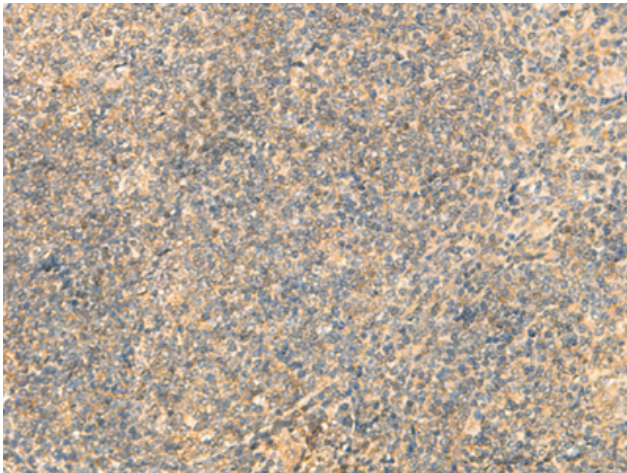
**Purification:** Antigen affinity purification

**Species Reactivity:** Human, Mouse, Rat

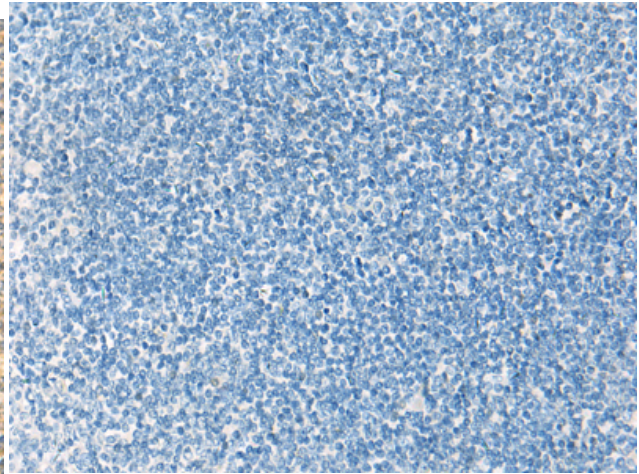
**Constituents:** PBS (without Mg<sup>2+</sup> and Ca<sup>2+</sup>), pH 7.4, 150 mM NaCl, 0.05% Sodium Azide and 40% glycerol

**Research Areas:** Signal Transduction

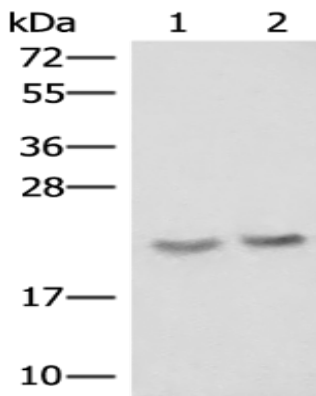
**Storage & Shipping:** Store at -20°C. Avoid repeated freezing and thawing



Immunohistochemistry analysis of paraffin embedded Human tonsil tissue using 218996 (IFT22 Antibody) at a dilution of 1/50 (Cytoplasm).



In comparison with the IHC on the left, the same paraffin-embedded Human tonsil tissue is first treated with the fusion protein and then with 218996 (Anti-IFT22 Antibody) at dilution 1/50.



Gel: 12% SDS-PAGE, Lysate: 40  $\mu$ g;  
 Lane 1-2: A172, A549 cell lysates;  
 Primary antibody: 218996 (IFT22 Antibody) at dilution 1/250;  
 Secondary antibody: Goat anti rabbit IgG at 1/8000 dilution;  
 Exposure time: 1 minute