

## IFT74 RABBIT PAB

**Cat.#:** S220466

**Product Name:** Anti-IFT74 Rabbit Polyclonal Antibody

**Synonyms:** CMG1; CCDC2; CMG-1

**UNIPROT ID:** Q96LB3 (Gene Accession - NP\_001092692 )

**Background:** Capillary morphogenesis protein 1 (CMG1), also known as intraflagellar transport protein 74 (ITP74) or coiled-coil domain-containing protein 2 (CCDC2), is a 600 amino acid human homologue of IFT-71, a complex B protein supporting intraflagellar transport (IFT) in *Chlamydomonas*. CMG1 localizes to the cytoplasmic vesicle and is highly expressed in adult and fetal kidney and testis, with lower levels of expression in adult heart, placenta, lung, liver and pancreas, and in fetal heart, lung and liver. CMG1 has been suggested to have a role in the primary cilia of HUVEC, and it also functions as a transcriptional regulator of cyclin D2 in spermatocyte-derived cells.

**Immunogen:** Synthetic peptide of human IFT74

**Applications:** ELISA, IHC

**Recommended Dilutions:** IHC: 50-200; ELISA: 1000-5000

**Host Species:** Rabbit

**Clonality:** Rabbit Polyclonal

**Isotype:** Immunogen-specific rabbit IgG

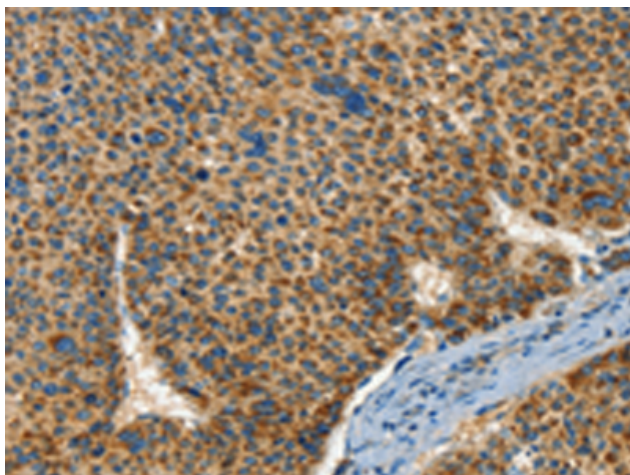
**Purification:** Antigen affinity purification

**Species Reactivity:** Human

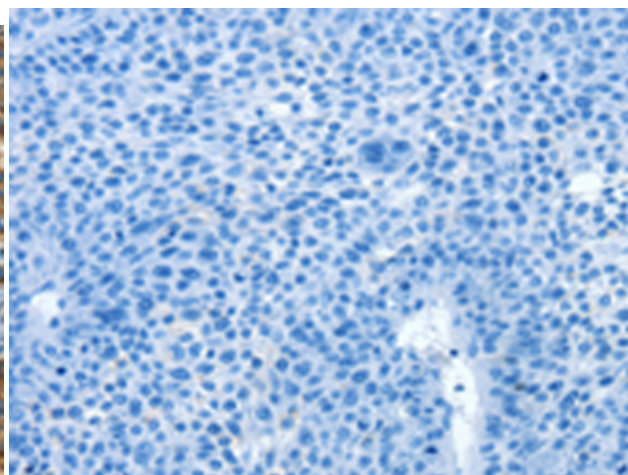
**Constituents:** PBS (without Mg<sup>2+</sup> and Ca<sup>2+</sup>), pH 7.4, 150 mM NaCl, 0.05% Sodium Azide and 40% glycerol

**Research Areas:** Cardiovascular

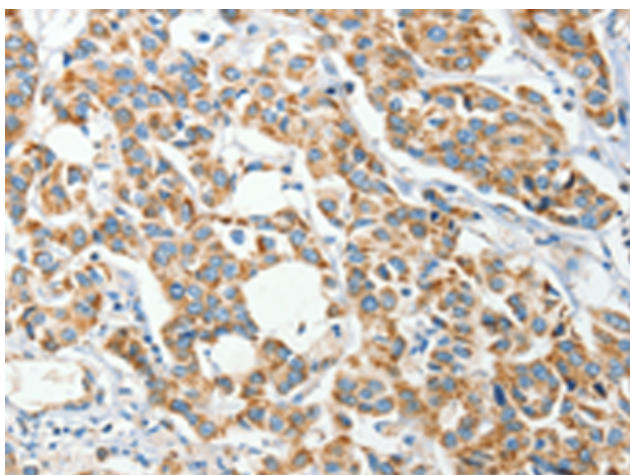
**Storage & Shipping:** Store at -20°C. Avoid repeated freezing and thawing



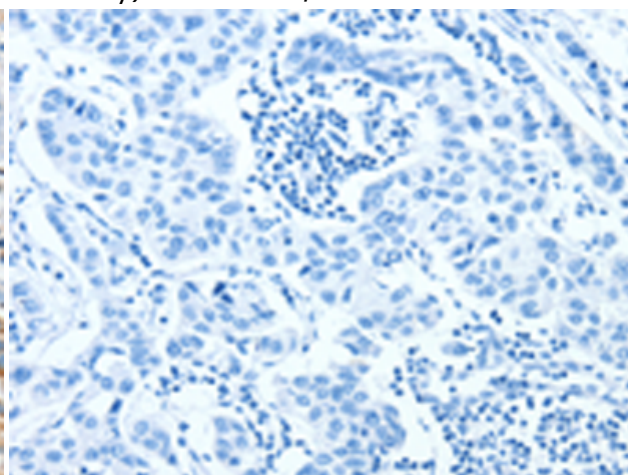
Immunohistochemistry analysis of paraffin embedded Human liver cancer tissue using 220466 (IFT74 Antibody) at a dilution of 1/60 (Cytoplasm).



In comparison with the IHC on the left, the same paraffin-embedded Human liver cancer tissue is first treated with the synthetic peptide and then with 220466 (Anti-IFT74 Antibody) at dilution 1/60.



The image on the left is immunohistochemistry of paraffin-embedded Human breast cancer tissue using 220466 (Anti-IFT74 Antibody) at a dilution of 1/60.



In comparison with the IHC on the left, the same paraffin-embedded Human breast cancer tissue is first treated with synthetic peptide and then with D261571 (Anti-IFT74 Antibody) at dilution 1/60.