

**IGF-1R(DMC721) IGG1 CHIMERIC MAB****Cat.#:** 28563**Product Name:** Anti-IGF-1R(DMC721) IgG1 Chimeric Monoclonal Antibody**Synonyms:** CD221; IGFIR; IGFR; JTK13**Description:** Anti-IGF-1R antibody(DMC721) IgG1 Chimeric Monoclonal Antibody**Background:** This receptor binds insulin-like growth factor with a high affinity. It has tyrosine kinase activity. The insulin-like growth factor I receptor plays a critical role in transformation events. Cleavage of the precursor generates alpha and beta subunits. It is highly overexpressed in most malignant tissues where it functions as an anti-apoptotic agent by enhancing cell survival. Alternatively spliced transcript variants encoding distinct isoforms have been found for this gene. [provided by RefSeq, May 2014]**Applications:** Flow Cyt**Recommended Dilutions:** Flow Cyt 1/100**Host Species:** Rabbit**Isotype:** Rabbit/Human Fc chimeric IgG1**Purification:** Purified from cell culture supernatant by affinity chromatography**Species Reactivity:** Human IGF-1R**Constituents:** Lyophilized from sterile PBS, pH 7.4. 5 % – 8% trehalose is added as protectants before lyophilization.**Storage & Shipping:** Store at -20°C to -80°C for 12 months in lyophilized form. After reconstitution, if not intended for use within a month, aliquot and store at -80°C (Avoid repeated freezing and thawing).

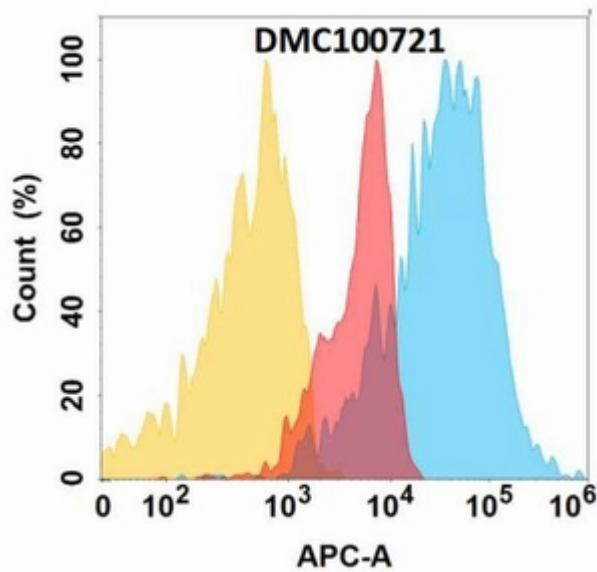


Figure 1. IGF-1R protein is highly expressed on the surface of Expi293 cell membrane. Flow cytometry analysis with Anti-IGF-1R (DMC721) mAb on Expi293 cells transfected with human IGF-1R (Blue histogram) or Expi293 transfected with irrelevant protein (Red histogram), and Isotype antibody on Expi293 transfected with irrelevant protein (Orange histogram).