

IGFBP2 RABBIT MAB

Cat.#: N262389

Product Name: Anti-IGFBP2 Rabbit Monoclonal Antibody

Synonyms: IGFBP2; BP2; IBP2; Insulin-like growth factor-binding protein 2; IBP-2; IGF-binding protein 2; IGFBP-2

UNIPROT ID: P18065

Background: Inhibits IGF-mediated growth and developmental rates. IGF-binding proteins prolong the half-life of the IGFs and have been shown to either inhibit or stimulate the growth promoting effects of the IGFs on cell culture. They alter the interaction of IGFs with their cell surface receptors.

Immunogen: Recombinant protein of human IGFBP2

Applications: WB,IHC-P,IP

Recommended Dilutions: WB: 1/500-1/1000 IHC: 1/50-1/100 IP: 1/20

Host Species: Rabbit

Clonality: Rabbit Monoclonal

Clone ID: R03-519

MW: Calculated MW: 35 kDa; Observed MW: 35 kDa

Isotype: IgG

Purification: Affinity Purified

Species Reactivity: Human

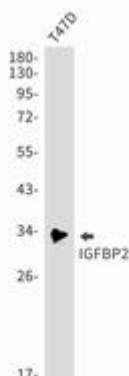
Conjugation: Unconjugated

Modification: Unmodified

Constituents: PBS (without Mg²⁺ and Ca²⁺), pH 7.3 containing 50% glycerol, 0.5% BSA and 0.02% sodium azide

Research Areas: Signal Transduction

Storage & Shipping: Store at -20°C. Avoid repeated freezing and thawing



Western blot analysis of IGFBP2 in T47D lysates using IGFBP2 antibody.



Product Description

Pioneering GTPase and Oncogene Product Development since 2010
