

## IGHG1 RABBIT PAB

**Cat.#:** S216066

**Product Name:** Anti-IGHG1 Rabbit Polyclonal Antibody

**Synonyms:**

**UNIPROT ID:** P01857 (Gene Accession - Hs.510635 )

**Background:** The function of this protein remains unknown.

**Immunogen:** Synthetic peptide of human IGHG1

**Applications:** ELISA, IHC

**Recommended Dilutions:** IHC: 50-200; ELISA: 5000-10000

**Host Species:** Rabbit

**Clonality:** Rabbit Polyclonal

**Isotype:** Immunogen-specific rabbit IgG

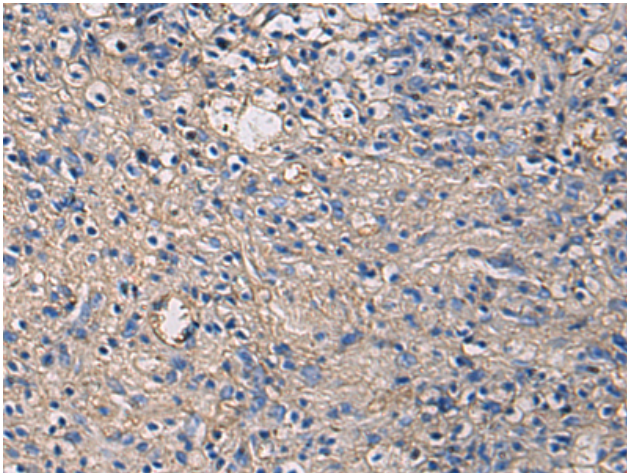
**Purification:** Antigen affinity purification

**Species Reactivity:** Human

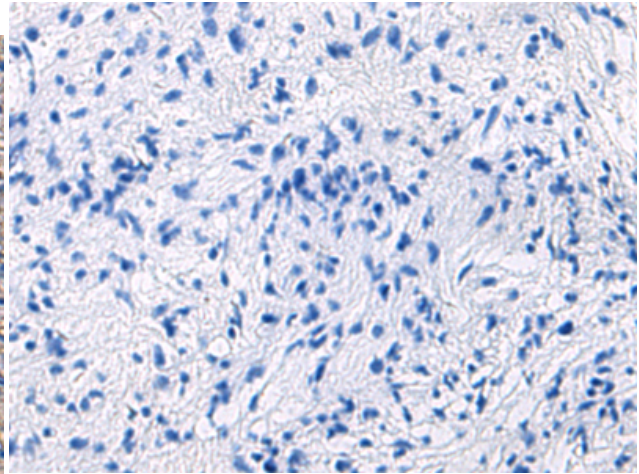
**Constituents:** PBS (without Mg<sup>2+</sup> and Ca<sup>2+</sup>), pH 7.4, 150 mM NaCl, 0.05% Sodium Azide and 40% glycerol

**Research Areas:** Immunology

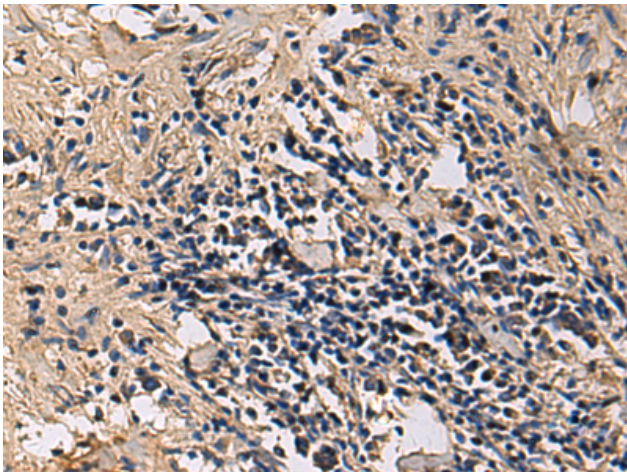
**Storage & Shipping:** Store at -20°C. Avoid repeated freezing and thawing



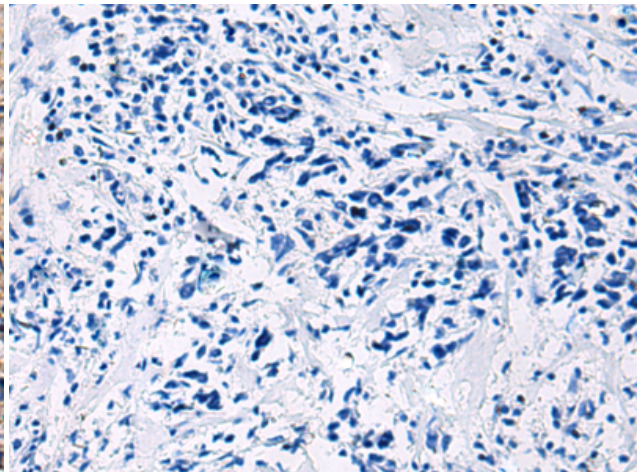
Immunohistochemistry analysis of paraffin embedded Human brain using 216066(IGHG1 Antibody) at a dilution of 1/60(Secreted).



In comparison with the IHC on the left, the same paraffin-embedded Human brain is first treated with the synthetic peptide and then with 216066(Anti-IGHG1 Antibody) at dilution 1/60.



The image on the left is immunohistochemistry of paraffin-embedded Human breast cancer using 216066(Anti-IGHG1 Antibody) at a dilution of 1/60.



In comparison with the IHC on the left, the same paraffin-embedded Human breast cancer is first treated with synthetic peptide and then with D164356(Anti-IGHG1 Antibody) at dilution 1/60.