

IHO1 RABBIT PAB

Cat.#: S213193

Product Name: Anti-IHO1 Rabbit Polyclonal Antibody

Synonyms: CT74; LELA1; CCDC36

UNIPROT ID: Q8IYA8 (Gene Accession - BC036202)

Background: Required for DNA double-strand breaks (DSBs) formation in unsynapsed regions during meiotic recombination. Probably acts by forming a complex with MEI4 and REC114, which activates DSBs formation in unsynapsed regions, an essential step to ensure completion of synapsis. Not required for HORMAD1 functions in pairing-independent synaptonemal complex formation, ATR recruitment to unsynapsed axes, meiotic silencing of unsynapsed chromatin (MSUC) or meiotic surveillance.

Immunogen: Fusion protein of human IHO1

Applications: ELISA, IHC

Recommended Dilutions: IHC: 100-300; ELISA: 5000-10000

Host Species: Rabbit

Clonality: Rabbit Polyclonal

Isotype: Immunogen-specific rabbit IgG

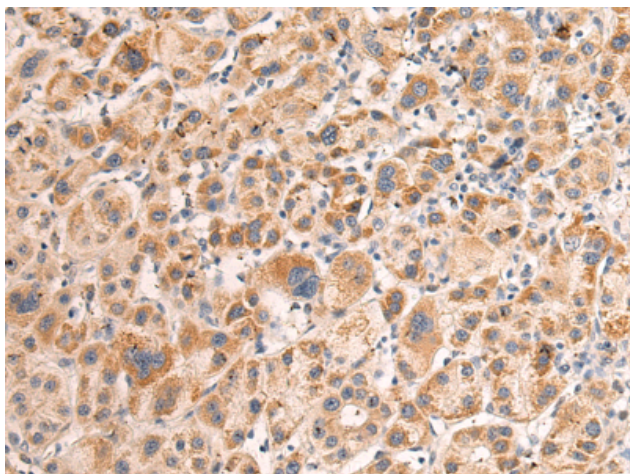
Purification: Antigen affinity purification

Species Reactivity: Human

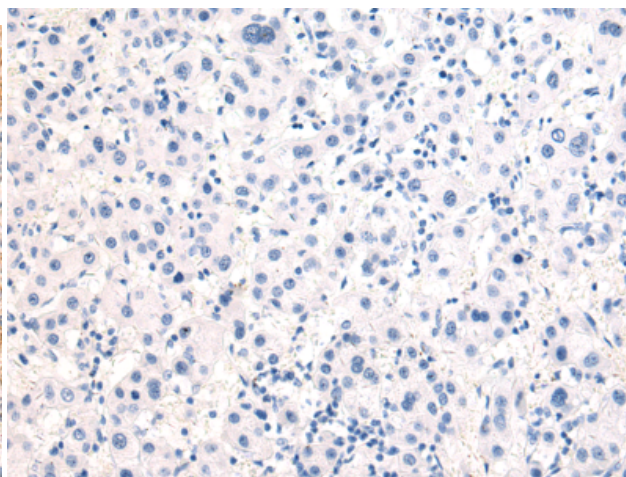
Constituents: PBS (without Mg²⁺ and Ca²⁺), pH 7.4, 150 mM NaCl, 0.05% Sodium Azide and 40% glycerol

Research Areas: Epigenetics and Nuclear Signaling

Storage & Shipping: Store at -20°C. Avoid repeated freezing and thawing



Immunohistochemistry analysis of paraffin embedded Human liver cancer tissue using 213193(IHO1 Antibody) at a dilution of 1/120(Cytoplasm).



In comparison with the IHC on the left, the same paraffin-embedded Human liver cancer tissue is first treated with the fusion protein and then with 213193(Anti-IHO1 Antibody) at dilution 1/120.