

## I $\kappa$ B BETA RABBIT MAB

**Cat.#:** N262395

**Product Name:** Anti-I $\kappa$ B beta Rabbit Monoclonal Antibody

**Synonyms:** NFKB1B; IKBB; TRIP9; NF- $\kappa$ B inhibitor beta; NF- $\kappa$ B1B; I- $\kappa$ B-beta; I $\kappa$ B-B; I $\kappa$ B-beta; I $\kappa$ Bbeta; Thyroid receptor-interacting protein 9; TR-interacting protein 9; TRIP-9

**UNIPROT ID:** Q15653

**Background:** I $\kappa$ B-beta a protein of the NF- $\kappa$ B inhibitor family. Inhibits NF- $\kappa$ B by complexing with and trapping it in the cytoplasm. However, the unphosphorylated form resynthesized after cell stimulation is able to bind NF- $\kappa$ B allowing its transport to the nucleus and protecting it to further I $\kappa$ B- dependent inactivation.

**Immunogen:** A synthetic peptide of human I $\kappa$ B beta

**Applications:** WB,IHC-P,IP

**Recommended Dilutions:** WB: 1/500-1/1000 IHC: 1/50-1/100 IP: 1/20

**Host Species:** Rabbit

**Clonality:** Rabbit Monoclonal

**Clone ID:** R02-3C1

**MW:** Calculated MW: 38 kDa; Observed MW: 48 kDa

**Isotype:** IgG

**Purification:** Affinity Purified

**Species Reactivity:** Human,Mouse

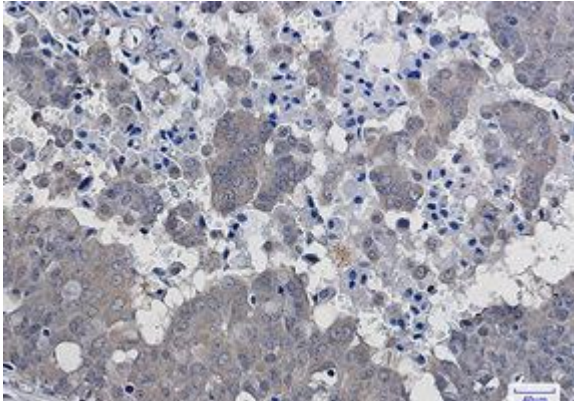
**Conjugation:** Unconjugated

**Modification:** Unmodified

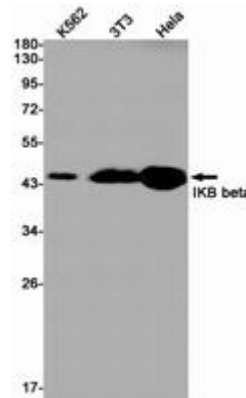
**Constituents:** PBS (without Mg<sup>2+</sup> and Ca<sup>2+</sup>), pH 7.3 containing 50% glycerol, 0.5% BSA and 0.02% sodium azide

**Research Areas:** Signal Transduction

**Storage & Shipping:** Store at -20°C. Avoid repeated freezing and thawing



Immunohistochemistry analysis of paraffin-embedded Human breast cancer using IKB beta antibody. High-pressure and temperature Sodium Citrate pH 6.0 was used for antigen retrieval.



Western blot analysis of IKB beta in K562, 3T3, Hela lysates using IKB beta antibody.