

I κ B EPSILON RABBIT MAB

Cat.#: N263381

Product Name: Anti-I κ B epsilon Rabbit Monoclonal Antibody

Synonyms: NFKBIE; IKBE; NF-kappa-B inhibitor epsilon; NF-kappa-BIE; I-kappa-B-epsilon; I κ B-E; I κ B-epsilon; I κ Bepsilon

UNIPROT ID: O00221

Background: Inhibits NF-kappa-B by complexing with and trapping it in the cytoplasm. Inhibits DNA-binding of NF-kappa-B p50-p65 and p50-c-Rel complexes.

Immunogen: A synthetic peptide of human I κ B epsilon

Applications: WB,IP

Recommended Dilutions: WB: 1/500-1/1000 IP: 1/20

Host Species: Rabbit

Clonality: Rabbit Monoclonal

Clone ID: R05-1B2

MW: Calculated MW: 53 kDa; Observed MW: 48 kDa

Isotype: IgG

Purification: Affinity Purified

Species Reactivity: Human

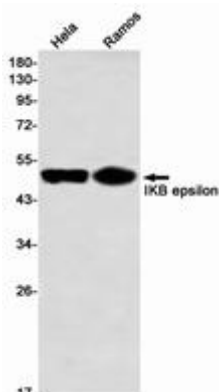
Conjugation: Unconjugated

Modification: Unmodified

Constituents: PBS (without Mg²⁺ and Ca²⁺), pH 7.3 containing 50% glycerol, 0.5% BSA and 0.02% sodium azide

Research Areas: Signal Transduction

Storage & Shipping: Store at -20°C. Avoid repeated freezing and thawing



Western blot analysis of I κ B epsilon in HeLa, Ramos lysates using I κ B epsilon antibody.



Product Description

Pioneering GTPase and Oncogene Product Development since 2010
