

## I $\kappa$ B EPSILON RABBIT PAB

**Cat.#:** N225895

**Product Name:** Anti-I $\kappa$ B epsilon Rabbit pAb

**Synonyms:** NF $\kappa$ BIE; I $\kappa$ BE; NF-kappa-B inhibitor epsilon; NF-kappa-BIE; I-kappa-B-epsilon; I $\kappa$ B-E; I $\kappa$ B-epsilon; I $\kappa$ Bepsilon

**UNIPROT ID:** O00221

**Background:** Inhibits NF-kappa-B by complexing with and trapping it in the cytoplasm. Inhibits DNA-binding of NF-kappa-B p50-p65 and p50-c-Rel complexes.

**Immunogen:** A synthesized peptide derived from human I $\kappa$ B epsilon

**Applications:** WB,IHC-P,ICC/IF,IP

**Recommended Dilutions:** WB: 1/500-1/1000 IHC: 1/50-1/100 IF: 1/50-1/200 IP: 1/20

**Host Species:** Rabbit

**Clonality:** Rabbit Polyclonal

**Clone ID:** -

**MW:** Calculated MW: 53 kDa; Observed MW: 45 kDa

**Isotype:** IgG

**Purification:** Affinity Chromatography

**Species Reactivity:** Human

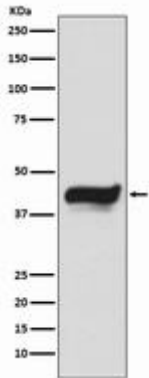
**Conjugation:** Unconjugated

**Modification:** Unmodified

**Constituents:** PBS (without Mg<sup>2+</sup> and Ca<sup>2+</sup>), pH 7.3 containing 50% glycerol, 0.5% BSA and 0.02% sodium azide

**Research Areas:** Signal Transduction

**Storage & Shipping:** Store at -20°C. Avoid repeated freezing and thawing



Western blot analysis of IKB epsilon in HeLa lysates using IKB epsilon antibody.