

## IKK ALPHA RABBIT MAB

**Cat.#:** N261687

**Product Name:** Anti-IKK alpha Rabbit Monoclonal Antibody

**Synonyms:** CHUK; IKKA; TCF16; Inhibitor of nuclear factor kappa-B kinase subunit alpha; I-kappa-B kinase alpha; IKK-A; IKK-alpha; IkbKA; IkappaB kinase; Conserved helix-loop-helix ubiquitous kinase; I-kappa-B kinase 1; IKK1; Nuclear factor NF-kappa-B

**UNIPROT ID:** O15111

**Background:** Plays an essential role in the NF-kappa-B signaling pathway which is activated by multiple stimuli such as inflammatory cytokines, bacterial or viral products, DNA damages or other cellular stresses. Activation of IKK depends upon phosphorylation at Ser177 and Ser181 in the activation loop of IKK $\beta$  (Ser176 and Ser180 in IKK $\alpha$ ), which causes conformational changes, resulting in kinase activation.

**Immunogen:** A synthetic peptide of human IKK alpha

**Applications:** WB,IP

**Recommended Dilutions:** WB: 1/500-1/1000 IP: 1/20

**Host Species:** Rabbit

**Clonality:** Rabbit Monoclonal

**Clone ID:** R03-1E7

**MW:** Calculated MW: 85 kDa; Observed MW: 85 kDa

**Isotype:** IgG

**Purification:** Affinity Purified

**Species Reactivity:** Human

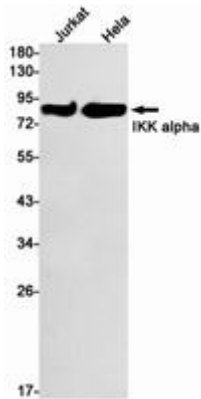
**Conjugation:** Unconjugated

**Modification:** Unmodified

**Constituents:** PBS (without Mg<sup>2+</sup> and Ca<sup>2+</sup>), pH 7.3 containing 50% glycerol, 0.5% BSA and 0.02% sodium azide

**Research Areas:** Signal Transduction

**Storage & Shipping:** Store at -20°C. Avoid repeated freezing and thawing



Western blot analysis of IKK alpha in Jurkat, Hela lysates using IKK alpha antibody.