

IKK EPSILON RABBIT PAB

Cat.#: N226023

Product Name: Anti-IKK epsilon Rabbit pAb

Synonyms: IKBKE; IKKE; IKKI; KIAA0151; Inhibitor of nuclear factor kappa-B kinase subunit epsilon; I-kappa-B kinase epsilon; IKK-E; IKK-epsilon; IkbKE; Inducible I kappa-B kinase; IKK-i

UNIPROT ID: Q14164

Background: Phosphorylates inhibitors of NF-kappa-B thus leading to the dissociation of the inhibitor/NF-kappa-B complex and ultimately the degradation of the inhibitor. May play a special role in the immune response. Protects cells against DNA damage-induced cell death.

Immunogen: A synthetic peptide of human IKKi/IKKe

Applications: WB,IHC-F,IHC-P,ICC/IF,FC

Recommended Dilutions: WB: 1/500-1/1000 IHC: 1/50-1/100 IF: 1/50-1/200 FC: 1/50-1/100

Host Species: Rabbit

Clonality: Rabbit Polyclonal

Clone ID: -

MW: Calculated MW: 80 kDa; Observed MW: 80 kDa

Isotype: IgG

Purification: Affinity Purified

Species Reactivity: Human

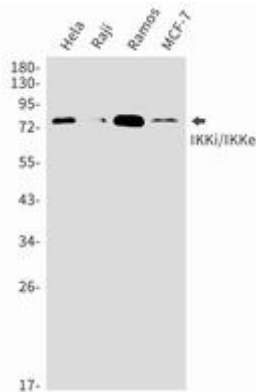
Conjugation: Unconjugated

Modification: Unmodified

Constituents: PBS (without Mg²⁺ and Ca²⁺), pH 7.3 containing 50% glycerol, 0.5% BSA and 0.02% sodium azide

Research Areas: Cell Biology

Storage & Shipping: Store at -20°C. Avoid repeated freezing and thawing



Western blot analysis of IKKi/IKKe in HeLa, Raji, Ramos, MCF-7 lysates using IKK epsilon antibody.