

## IL-11 RECEPTOR ALPHA RABBIT MAB

**Cat.#:** N262400

**Product Name:** Anti-IL-11 Receptor alpha Rabbit Monoclonal Antibody

**Synonyms:** IL11RA; Interleukin-11 receptor subunit alpha; IL-11 receptor subunit alpha; IL-11R subunit alpha; IL-11R-alpha; IL-11RA

**UNIPROT ID:** Q14626

**Background:** Receptor for interleukin-11. The receptor systems for IL6, LIF, OSM, CNTF, IL11 and CT1 can utilize IL6ST for initiating signal transmission. The IL11/IL11RA/IL6ST complex may be involved in the control of proliferation and/or differentiation of skeletogenic progenitor or other mesenchymal cells. Essential for the normal development of craniofacial bones and teeth. Restricts suture fusion and tooth number.

**Immunogen:** A synthetic peptide of human IL11RA

**Applications:** WB,IHC-P

**Recommended Dilutions:** WB: 1/500-1/1000 IHC: 1/50-1/100

**Host Species:** Rabbit

**Clonality:** Rabbit Monoclonal

**Clone ID:** R08-2J3

**MW:** Calculated MW: 45 kDa; Observed MW: 45 kDa

**Isotype:** IgG

**Purification:** Affinity Purified

**Species Reactivity:** Human

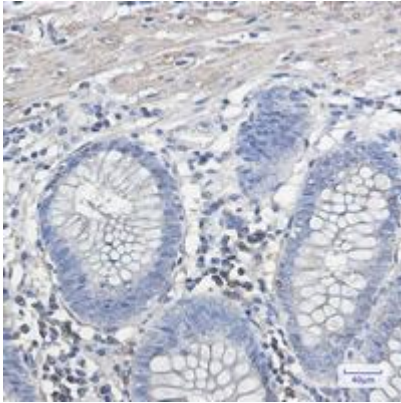
**Conjugation:** Unconjugated

**Modification:** Unmodified

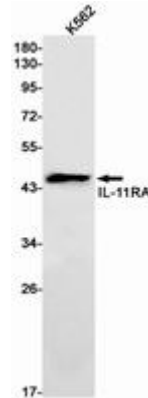
**Constituents:** PBS (without Mg<sup>2+</sup> and Ca<sup>2+</sup>), pH 7.3 containing 50% glycerol, 0.5% BSA and 0.02% sodium azide

**Research Areas:** Immunology

**Storage & Shipping:** Store at -20°C. Avoid repeated freezing and thawing



Immunohistochemistry analysis of paraffin-embedded Human colon cancer using IL-11RA antibody. High-pressure and temperature Sodium Citrate pH 6.0 was used for antigen retrieval.



Western blot analysis of IL-11RA in K562 lysates using IL-11 Receptor alpha antibody.