

IL-18 RECEPTOR ACCESSORY PROTEIN RABBIT PAB

Cat.#: N225083

Product Name: Anti-IL-18 Receptor Accessory Protein Rabbit pAb

Synonyms: IL-18 Receptor Accessory Protein; ACPL; CD218b; IL18RB; CDw218b

UNIPROT ID: O95256

Background: Interleukin 18 receptor accessory protein, also known as IL18RAP and CDw218b (cluster of differentiationw218b), is a human gene. The protein encoded by this gene is an accessory subunit of the heterodimeric receptor for IL18. This protein enhances the IL18 binding activity of IL18R1 (IL1RRP), a ligand binding subunit of IL18 receptor. The coexpression of IL18R1 and this protein is required for the activation of NF- κ B and MAPK8 (JNK) in response to IL18.

Immunogen: Synthetic peptide from human protein at AA range: 291-340

Applications: IHC-P,ELISA

Recommended Dilutions: IHC: 1/50-1/100 ELISA: 1/10000

Host Species: Rabbit

Clonality: Rabbit Polyclonal

Clone ID: -

MW: -

Isotype: IgG

Purification: Affinity Purified

Species Reactivity: Human

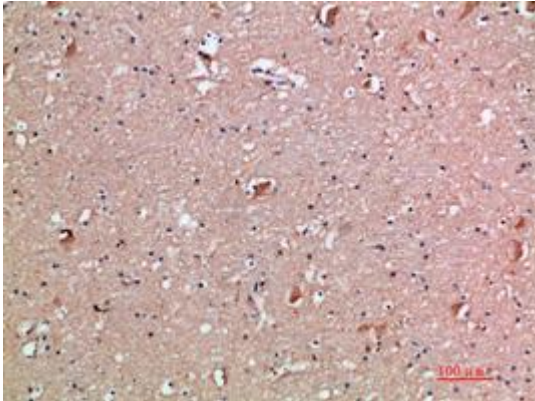
Conjugation: Unconjugated

Modification: Unmodified

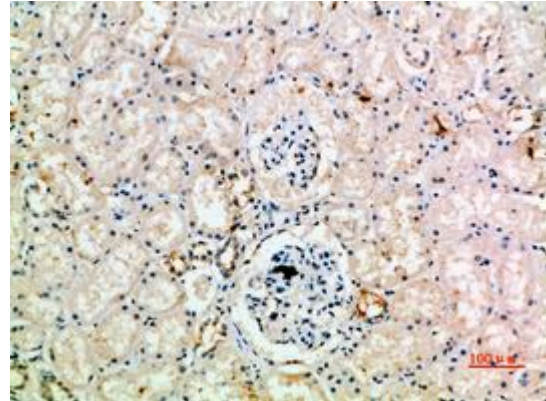
Constituents: PBS (without Mg²⁺ and Ca²⁺), pH 7.3 containing 50% glycerol, 0.5% BSA and 0.02% sodium azide

Research Areas: Immunology

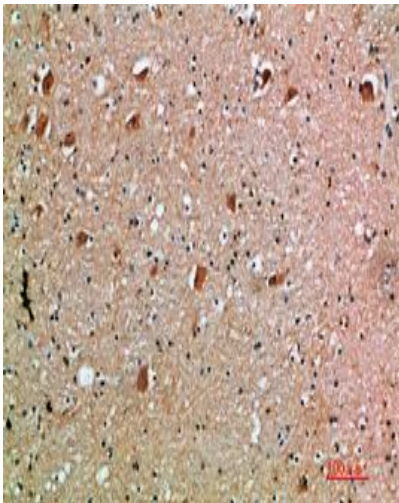
Storage & Shipping: Store at -20°C. Avoid repeated freezing and thawing



Immunohistochemical analysis of paraffin-embedded Human tonsils using IL-18 Receptor Accessory Protein antibody. High-pressure and temperature Sodium Citrate pH 6.0 was used for antigen retrieval.



Immunohistochemistry analysis of paraffin-embedded Human kidney using IL-18 Receptor Accessory Protein antibody. High-pressure and temperature Sodium Citrate pH 6.0 was used for antigen retrieval.



Immunohistochemistry analysis of paraffin-embedded Human brain using IL-18 Receptor Accessory Protein antibody. High-pressure and temperature Sodium Citrate pH 6.0 was used for antigen retrieval.