

## IL-22 RABBIT PAB

**Cat.#:** N225206

**Product Name:** Anti-IL-22 Rabbit pAb

**Synonyms:** IL-22; IL22; ILTIF; ZCYTO18; Interleukin-22; IL-22; Cytokine Zcyto18; IL-10-related T-cell-derived-inducible factor; IL-TIF

**UNIPROT ID:** Q9GZX6

**Background:** Cytokine that contributes to the inflammatory response in vivo.

**Immunogen:** The antiserum was produced against synthesized peptide derived from the C-terminal region of human IL22. AA range:121-170

**Applications:** WB,ELISA

**Recommended Dilutions:** WB: 1/500-1/1000 ELISA: 1/10000

**Host Species:** Rabbit

**Clonality:** Rabbit Polyclonal

**Clone ID:** -

**MW:** Calculated MW: 20 kDa; Observed MW: 20 kDa

**Isotype:** IgG

**Purification:** Affinity Purified

**Species Reactivity:** Human,Mouse,Rat

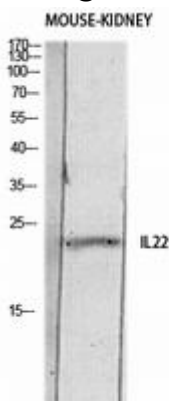
**Conjugation:** Unconjugated

**Modification:** Unmodified

**Constituents:** PBS (without Mg<sup>2+</sup> and Ca<sup>2+</sup>), pH 7.3 containing 50% glycerol, 0.5% BSA and 0.02% sodium azide

**Research Areas:** Immunology

**Storage & Shipping:** Store at -20°C. Avoid repeated freezing and thawing



Western blot analysis of IL-22 in mouse KIDNEY lysates using IL-22 antibody.



# Product Description

Pioneering GTPase and Oncogene Product Development since 2010

---