

## IL-26 RABBIT MAB

**Cat.#:** N263384

**Product Name:** Anti-IL-26 Rabbit Monoclonal Antibody

**Synonyms:** IL-26; AK155

**UNIPROT ID:** Q9NPH9

**Background:** May play a role in local mechanisms of mucosal immunity and seems to have a pro-inflammatory function.

**Immunogen:** A synthetic peptide of human IL-26

**Applications:** WB,IHC-P,IP

**Recommended Dilutions:** WB: 1/500-1/1000 IHC: 1/50-1/100 IP: 1/20

**Host Species:** Rabbit

**Clonality:** Rabbit Monoclonal

**Clone ID:** R07-3C0

**MW:** Calculated MW: 20 kDa; Observed MW: 20 kDa

**Isotype:** IgG

**Purification:** Affinity Purified

**Species Reactivity:** Human

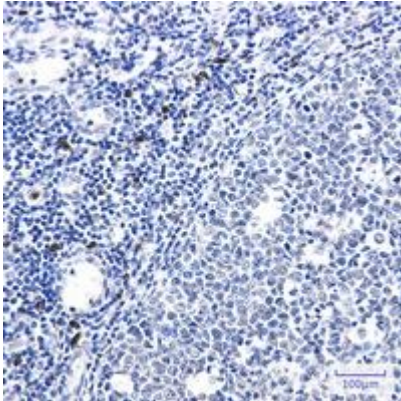
**Conjugation:** Unconjugated

**Modification:** Unmodified

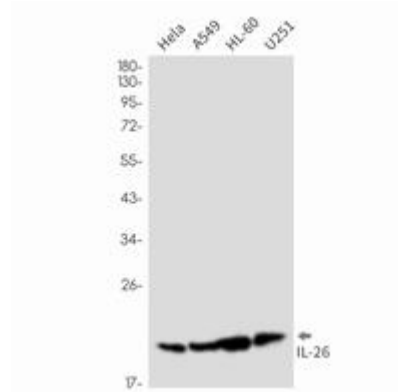
**Constituents:** PBS (without Mg<sup>2+</sup> and Ca<sup>2+</sup>), pH 7.3 containing 50% glycerol, 0.5% BSA and 0.02% sodium azide

**Research Areas:** Immunology

**Storage & Shipping:** Store at -20°C. Avoid repeated freezing and thawing



Immunohistochemistry analysis of paraffin-embedded Human tonsil using IL-26 antibody. High-pressure and temperature Sodium Citrate pH 6.0 was used for antigen retrieval.



Western blot analysis of IL-26 in HeLa, A549, HL-60, U251 lysates using IL-26 antibody.