

IL-37 RABBIT PAB

Cat.#: N225050

Product Name: Anti-IL-37 Rabbit pAb

Synonyms: IL-37; interleukin 37; FIL1; FIL1Z; IL-1H; IL1F7; IL1H4; IL-1F7; IL-1H4; IL1RP1; IL-1RP1; FIL1(ZETA)

UNIPROT ID: Q9NZH6

Background: Immune regulatory cytokine that acts as a suppressor of innate inflammatory and immune responses involved in curbing excessive inflammation.

Immunogen: Synthetic peptide from human protein at AA range: 101-150

Applications: IHC-P,ELISA

Recommended Dilutions: IHC: 1/50-1/100 ELISA: 1/10000

Host Species: Rabbit

Clonality: Rabbit Polyclonal

Clone ID: -

MW: -

Isotype: IgG

Purification: Affinity Purified

Species Reactivity: Human

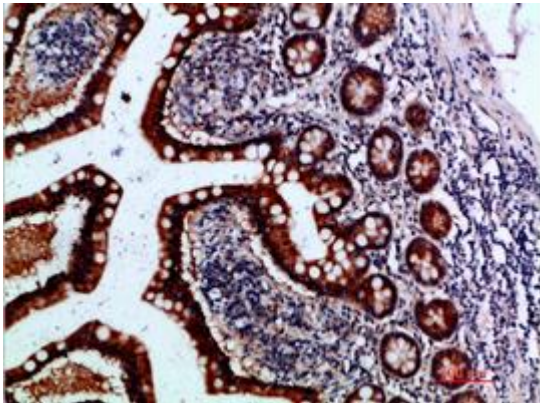
Conjugation: Unconjugated

Modification: Unmodified

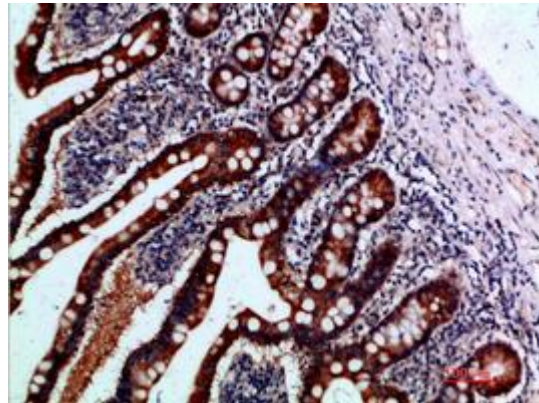
Constituents: PBS (without Mg²⁺ and Ca²⁺), pH 7.3 containing 50% glycerol, 0.5% BSA and 0.02% sodium azide

Research Areas: Immunology

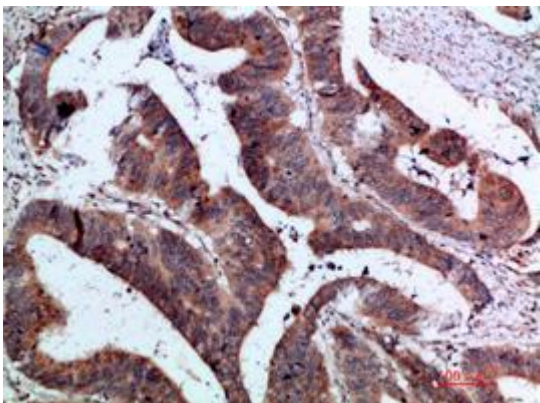
Storage & Shipping: Store at -20°C. Avoid repeated freezing and thawing



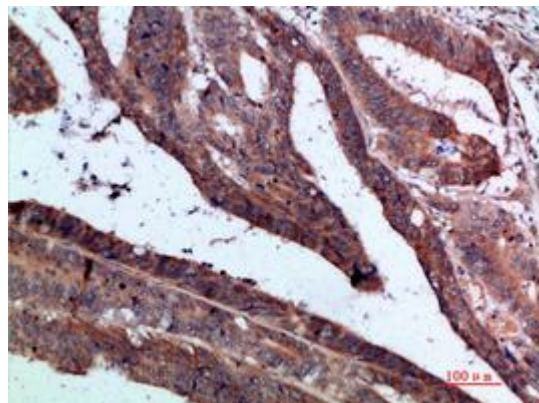
Immunohistochemical analysis of paraffin-embedded Human tonsils using IL-37 antibody. High-pressure and temperature Sodium Citrate pH 6.0 was used for antigen retrieval.



Immunohistochemistry analysis of paraffin-embedded Human small intestine using IL-37 antibody. High-pressure and temperature Sodium Citrate pH 6.0 was used for antigen retrieval.



Immunohistochemistry analysis of paraffin-embedded Human coloncancer using IL-37 antibody. High-pressure and temperature Sodium Citrate pH 6.0 was used for antigen retrieval.



Immunohistochemistry analysis of paraffin-embedded Human coloncancer using IL-37 antibody. High-pressure and temperature Sodium Citrate pH 6.0 was used for antigen retrieval.