

## IL13RA1 RABBIT PAB

**Cat.#:** S210096

**Product Name:** Anti-IL13RA1 Rabbit Polyclonal Antibody

**Synonyms:** NR4; CT19; CD213A1; IL-13Ra

**UNIPROT ID:** P78552 (Gene Accession - BC015768 )

**Background:** The protein encoded by this gene is a subunit of the interleukin 13 receptor. This subunit forms a receptor complex with IL4 receptor alpha, a subunit shared by IL13 and IL4 receptors. This subunit serves as a primary IL13-binding subunit of the IL13 receptor, and may also be a component of IL4 receptors. This protein has been shown to bind tyrosine kinase TYK2, and thus may mediate the signaling processes that lead to the activation of JAK1, STAT3 and STAT6 induced by IL13 and IL4.

**Immunogen:** Fusion protein of human IL13RA1

**Applications:** ELISA, WB, IHC

**Recommended Dilutions:** IHC: 100–200;WB: 1000–5000;ELISA: 5000–10000

**Host Species:** Rabbit

**Clonality:** Rabbit Polyclonal

**Isotype:** Immunogen-specific rabbit IgG

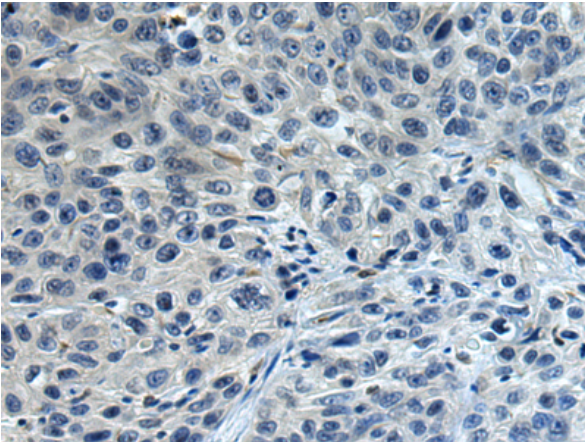
**Purification:** Antigen affinity purification

**Species Reactivity:** Human, Mouse

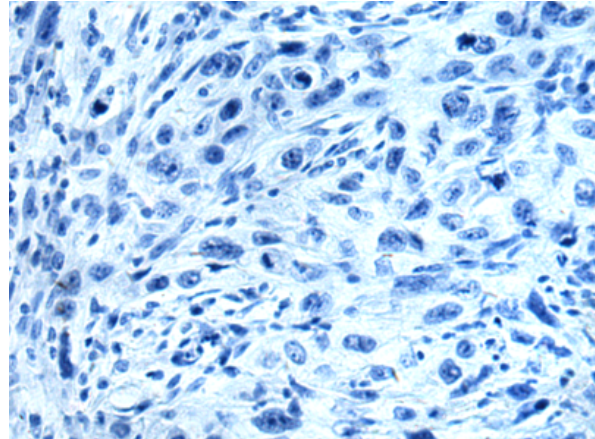
**Constituents:** PBS (without Mg<sup>2+</sup> and Ca<sup>2+</sup>), pH 7.4, 150 mM NaCl, 0.05% Sodium Azide and 40% glycerol

**Research Areas:** Signal Transduction, Immunology

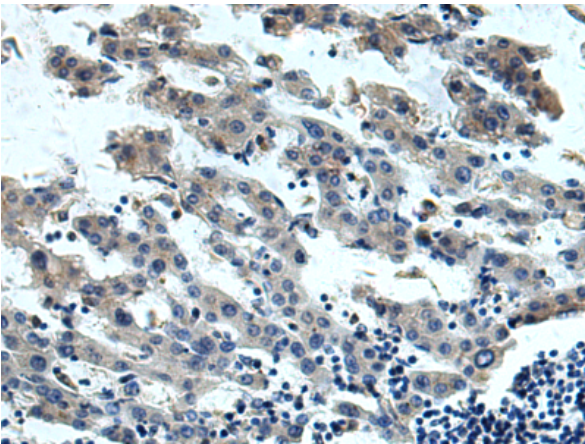
**Storage & Shipping:** Store at -20°C. Avoid repeated freezing and thawing



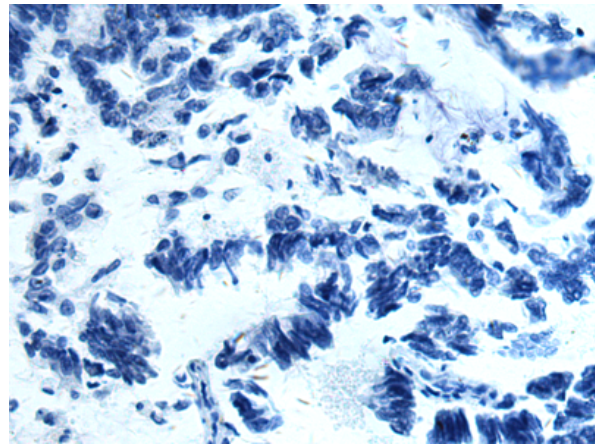
Immunohistochemistry analysis of paraffin embedded Human esophagus cancer tissue using 210096(IL13RA1 Antibody) at a dilution of 1/120(Cell membrane).



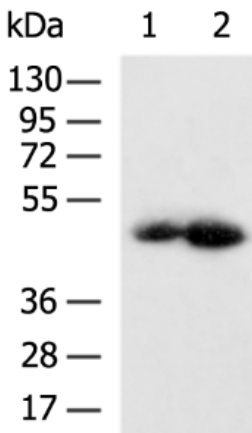
In comparison with the IHC on the left, the same paraffin-embedded Human esophagus cancer tissue is first treated with the fusion protein and then with 210096(Anti-IL13RA1 Antibody) at dilution 1/120.



The image on the left is immunohistochemistry of paraffin-embedded Human liver cancer tissue using 210096(Anti-IL13RA1 Antibody) at a dilution of 1/120.



In comparison with the IHC on the left, the same paraffin-embedded Human liver cancer tissue is first treated with fusion protein and then with D120166(Anti-IL13RA1 Antibody) at dilution 1/120.



Gel: 8%SDS-PAGE, Lysate: 40 µg;  
Lane 1-2: Mouse heart tissue, 293T cell lysates;  
Primary antibody: 210096(IL13RA1 Antibody) at dilution 1/1000;  
Secondary antibody: HRP-conjugated Goat anti rabbit IgG at 1/5000 dilution;  
Exposure time: 10 seconds



# Product Description

Pioneering GTPase and Oncogene Product Development since 2010

---