

IL17C RABBIT PAB

Cat.#: S220622

Product Name: Anti-IL17C Rabbit Polyclonal Antibody

Synonyms: CX2; IL-17C

UNIPROT ID: Q9P0M4 (Gene Accession - NP_037410)

Background: The protein encoded by this gene is a T cell-derived cytokine that shares the sequence similarity with IL17. This cytokine was reported to stimulate the release of tumor necrosis factor alpha and interleukin 1 beta from a monocytic cell line. The expression of this cytokine was found to be restricted to activated T cells.

Immunogen: Synthetic peptide of human IL17C

Applications: ELISA, WB, IHC

Recommended Dilutions: IHC: 50-200;WB: 500-2000;ELISA: 2000-5000

Host Species: Rabbit

Clonality: Rabbit Polyclonal

Isotype: Immunogen-specific rabbit IgG

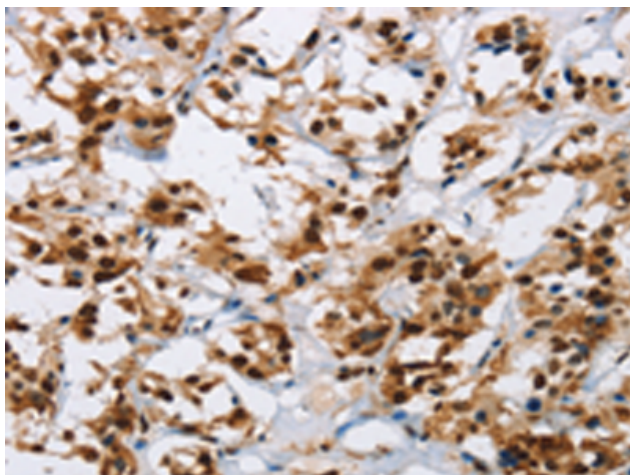
Purification: Antigen affinity purification

Species Reactivity: Human

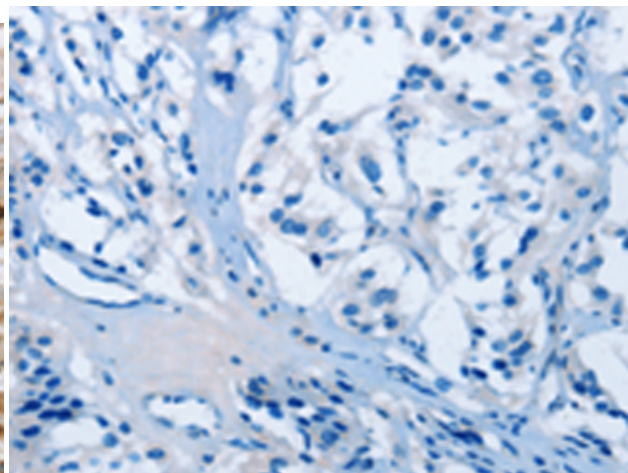
Constituents: PBS (without Mg²⁺ and Ca²⁺), pH 7.4, 150 mM NaCl, 0.05% Sodium Azide and 40% glycerol

Research Areas: Immunology

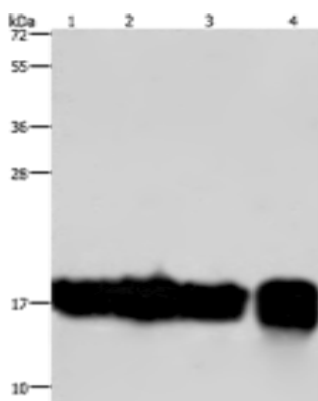
Storage & Shipping: Store at -20°C. Avoid repeated freezing and thawing



Immunohistochemistry analysis of paraffin embedded Human thyroid cancer tissue using 220622(IL17C Antibody) at a dilution of 1/50(Secreted).



In comparison with the IHC on the left, the same paraffin-embedded Human thyroid cancer tissue is first treated with the synthetic peptide and then with 220622(Anti-IL17C Antibody) at dilution 1/50.



Gel: 10%SDS-PAGE, Lysate: 40 µg;
Lane 1-4: A549 cells, K562 cells, Raji cells,
human fetal intestine tissue;
Primary antibody: 220622(IL17C Antibody) at
dilution 1/300;
Secondary antibody: Goat anti rabbit IgG at
1/8000 dilution;
Exposure time: 20 seconds