

## IL1A(4G2) IGG1 CHIMERIC MAB

**Cat.#:** 28569

**Product Name:** Anti-IL1A(4G2) IgG1 Chimeric Monoclonal Antibody

**Synonyms:** IL-1 alpha;IL-1A;IL1;IL1-ALPHA;IL1F1

**Description:** Anti-IL1A antibody(4G2) IgG1 Chimeric Monoclonal Antibody

**Background:** The protein encoded by this gene is a member of the interleukin 1 cytokine family. This cytokine is a pleiotropic cytokine involved in various immune responses, inflammatory processes, and hematopoiesis. This cytokine is produced by monocytes and macrophages as a proprotein, which is proteolytically processed and released in response to cell injury, and thus induces apoptosis. This gene and eight other interleukin 1 family genes form a cytokine gene cluster on chromosome 2. It has been suggested that the polymorphism of these genes is associated with rheumatoid arthritis and Alzheimer's disease. [provided by RefSeq, Jul 2008]

**Applications:** Flow Cyt

**Recommended Dilutions:** Flow Cyt 1/100

**Host Species:** Rabbit

**Isotype:** Rabbit/Human Fc chimeric IgG1

**Purification:** Purified from cell culture supernatant by affinity chromatography

**Species Reactivity:** Human IL1A

**Constituents:** Lyophilized from sterile PBS, pH 7.4. 5 % – 8% trehalose is added as protectants before lyophilization.

**Storage & Shipping:** Store at -20°C to -80°C for 12 months in lyophilized form. After reconstitution, if not intended for use within a month, aliquot and store at -80°C (Avoid repeated freezing and thawing).

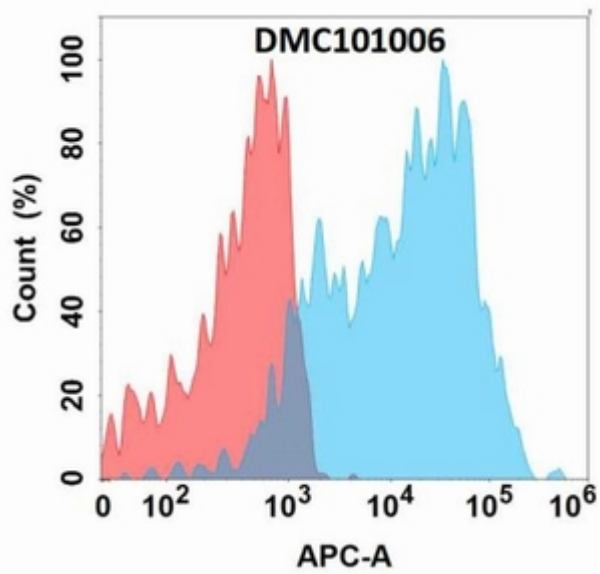


Figure 1. Flow cytometry analysis with Anti-IL1A (4G2) mAb on Expi293 cells transfected with human IL1A (Blue histogram) or Expi293 transfected with irrelevant protein (Red histogram).