

IL1RAPL2 RABBIT PAB

Cat.#: S222217

Product Name: Anti-IL1RAPL2 Rabbit Polyclonal Antibody

Synonyms: IL1R9; IL-1R9; TIGIRR-1; IL1RAPL-2

UNIPROT ID: Q9NP60 (Gene Accession - NP_059112)

Background: The protein encoded by this gene is a member of the interleukin 1 receptor family. This protein is similar to the interleukin 1 accessory proteins, and is most closely related to interleukin 1 receptor accessory protein-like 1 (IL1RAPL1). This gene and IL1RAPL1 are located at a region on chromosome X that is associated with X-linked non-syndromic cognitive disability.

Immunogen: Synthetic peptide of human IL1RAPL2

Applications: ELISA, IHC

Recommended Dilutions: IHC: 30-150; ELISA: 5000-10000

Host Species: Rabbit

Clonality: Rabbit Polyclonal

Isotype: Immunogen-specific rabbit IgG

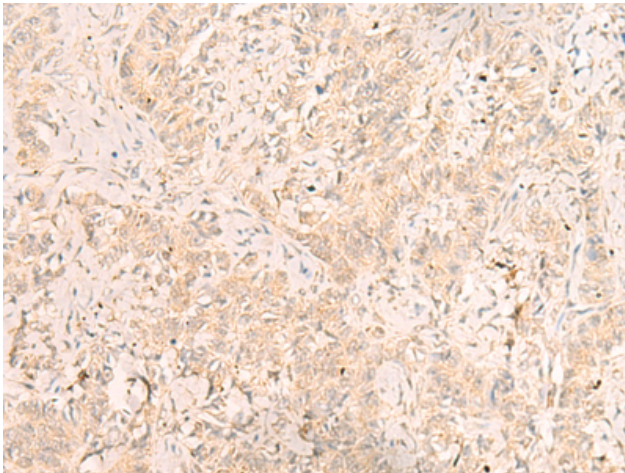
Purification: Antigen affinity purification

Species Reactivity: Human, Mouse

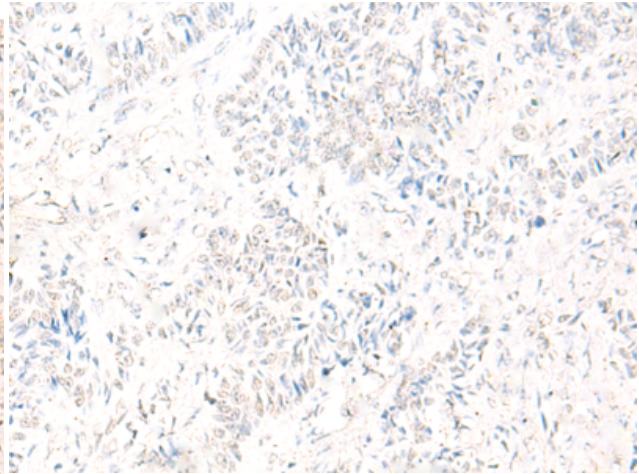
Constituents: PBS (without Mg²⁺ and Ca²⁺), pH 7.4, 150 mM NaCl, 0.05% Sodium Azide and 40% glycerol

Research Areas: Neuroscience

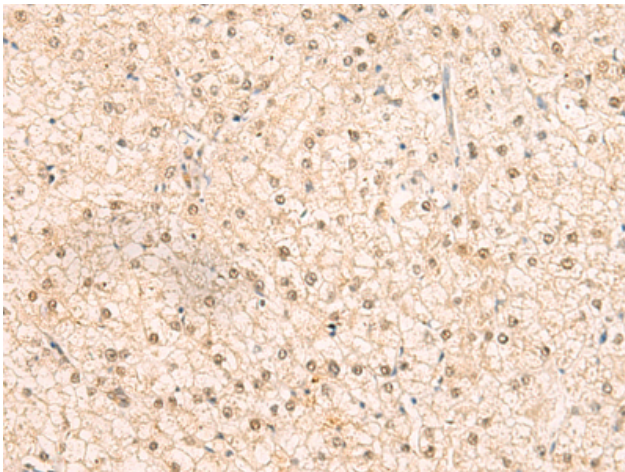
Storage & Shipping: Store at -20°C. Avoid repeated freezing and thawing



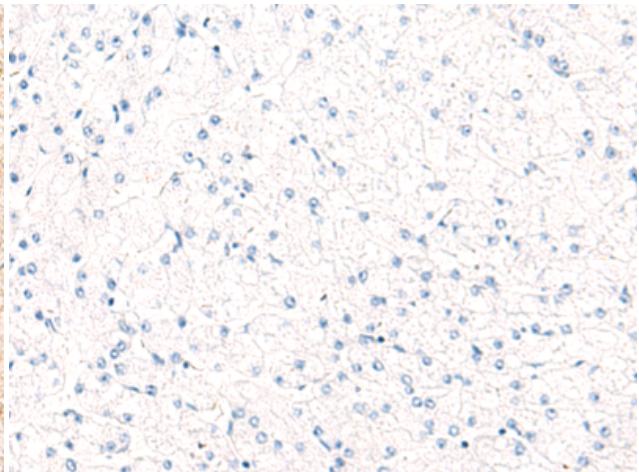
Immunohistochemistry analysis of paraffin embedded Human ovarian cancer tissue using 222217 (IL1RAPL2 Antibody) at a dilution of 1/20 (Cytoplasm and Nucleus).



In comparison with the IHC on the left, the same paraffin-embedded Human ovarian cancer tissue is first treated with the synthetic peptide and then with 222217 (Anti-IL1RAPL2 Antibody) at dilution 1/20.



The image on the left is immunohistochemistry of paraffin-embedded Human liver cancer tissue using 222217 (Anti-IL1RAPL2 Antibody) at a dilution of 1/20.



In comparison with the IHC on the left, the same paraffin-embedded Human liver cancer tissue is first treated with synthetic peptide and then with D264238 (Anti-IL1RAPL2 Antibody) at dilution 1/20.