

IL1RL1 RABBIT PAB

Cat.#: S216888

Product Name: Anti-IL1RL1 Rabbit Polyclonal Antibody

Synonyms: T1; ST2; DER4; ST2L; ST2V; FIT-1; IL33R

UNIPROT ID: Q01638 (Gene Accession - BC030975)

Background: The protein encoded by this gene is a member of the interleukin 1 receptor family. Studies of the similar gene in mouse suggested that this receptor can be induced by proinflammatory stimuli, and may be involved in the function of helper T cells. This gene, interleukin 1 receptor, type I (IL1R1), interleukin 1 receptor, type II (IL1R2) and interleukin 1 receptor-like 2 (IL1RL2) form a cytokine receptor gene cluster in a region mapped to chromosome 2q12. Alternative splicing of this gene results in multiple transcript variants.

Immunogen: Fusion protein of human IL1RL1

Applications: ELISA, WB, IHC

Recommended Dilutions: IHC: 50-200;WB: 500-2000;ELISA: 5000-10000

Host Species: Rabbit

Clonality: Rabbit Polyclonal

Isotype: Immunogen-specific rabbit IgG

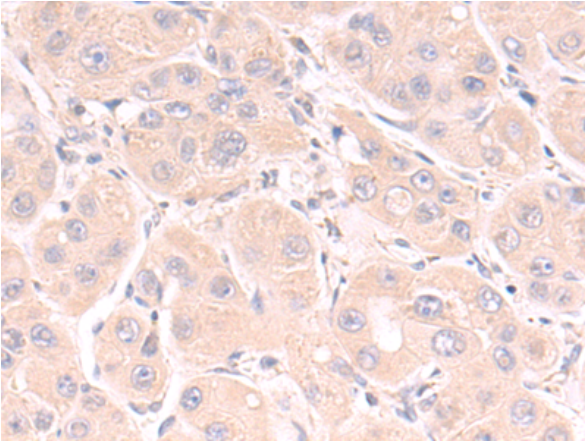
Purification: Antigen affinity purification

Species Reactivity: Human

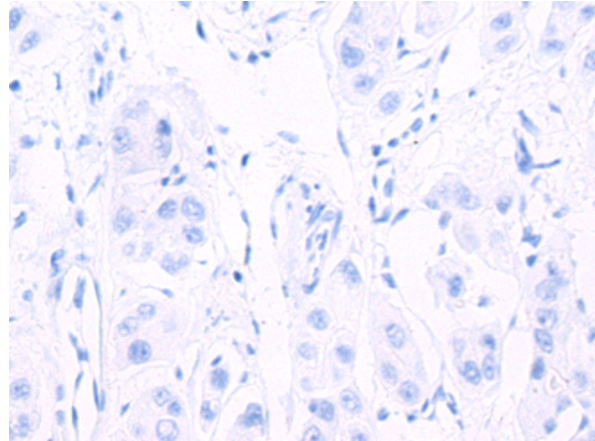
Constituents: PBS (without Mg²⁺ and Ca²⁺), pH 7.4, 150 mM NaCl, 0.05% Sodium Azide and 40% glycerol

Research Areas: Cardiovascular, Immunology

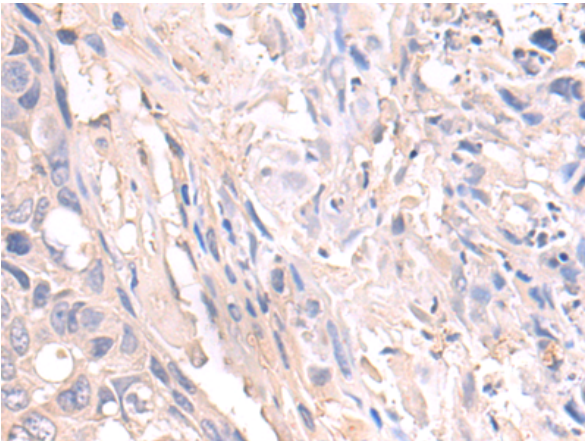
Storage & Shipping: Store at -20°C. Avoid repeated freezing and thawing



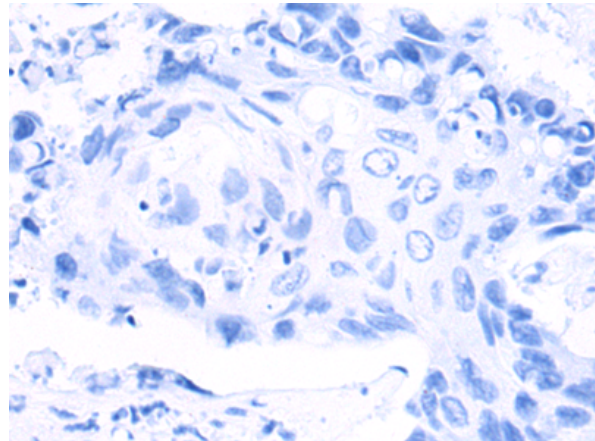
Immunohistochemistry analysis of paraffin embedded Human liver cancer tissue using 216888(ILIRL1 Antibody) at a dilution of 1/75(Cytoplasm).



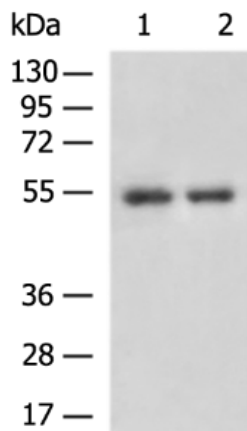
In comparison with the IHC on the left, the same paraffin-embedded Human liver cancer tissue is first treated with the fusion protein and then with 216888(Anti-ILIRL1 Antibody) at dilution 1/75.



The image on the left is immunohistochemistry of paraffin-embedded Human lung cancer tissue using 216888(Anti-ILIRL1 Antibody) at a dilution of 1/75.



In comparison with the IHC on the left, the same paraffin-embedded Human lung cancer tissue is first treated with fusion protein and then with D221414(Anti-ILIRL1 Antibody) at dilution 1/75.



Gel: 8%SDS-PAGE, Lysate: 40 µg;
Lane 1-2: Human stomach tissue, Human placenta tissue lysates;
Primary antibody: 216888(ILIRL1 Antibody) at dilution 1/800;
Secondary antibody: HRP-conjugated Goat anti rabbit IgG at 1/5000 dilution;
Exposure time: 10 minutes



Product Description

Pioneering GTPase and Oncogene Product Development since 2010
