

IL1RL2 RABBIT PAB

Cat.#: S219469

Product Name: Anti-IL1RL2 Rabbit Polyclonal Antibody

Synonyms: IL-36R; IL1RRP2; IL-1Rrp2; IL1R-rp2

UNIPROT ID: Q9HB29 (Gene Accession - BC107064)

Background: The protein encoded by this gene is a member of the interleukin 1 receptor family. An experiment with transient gene expression demonstrated that this receptor was incapable of binding to interleukin 1 alpha and interleukin 1 beta with high affinity. This gene and four other interleukin 1 receptor family genes, including interleukin 1 receptor, type I (IL1R1), interleukin 1 receptor, type II (IL1R2), interleukin 1 receptor-like 1 (IL1RL1), and interleukin 18 receptor 1 (IL18R1), form a cytokine receptor gene cluster in a region mapped to chromosome 2q12. [provided by RefSeq, Jul 2008]

Immunogen: Fusion protein of human IL1RL2

Applications: ELISA, WB, IHC

Recommended Dilutions: IHC: 200-300;WB: 500-2000;ELISA: 5000-10000

Host Species: Rabbit

Clonality: Rabbit Polyclonal

Isotype: Immunogen-specific rabbit IgG

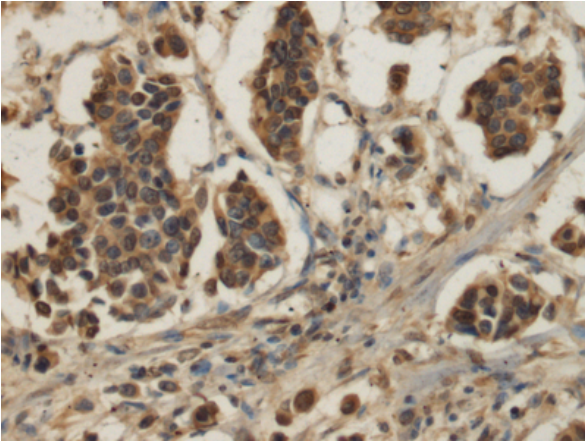
Purification: Antigen affinity purification

Species Reactivity: Human

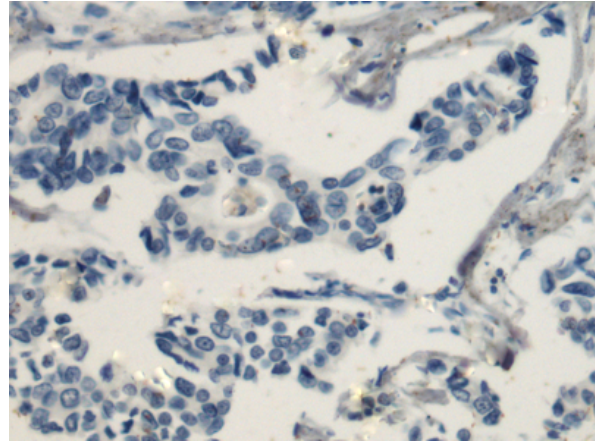
Constituents: PBS (without Mg²⁺ and Ca²⁺), pH 7.4, 150 mM NaCl, 0.05% Sodium Azide and 40% glycerol

Research Areas: Immunology

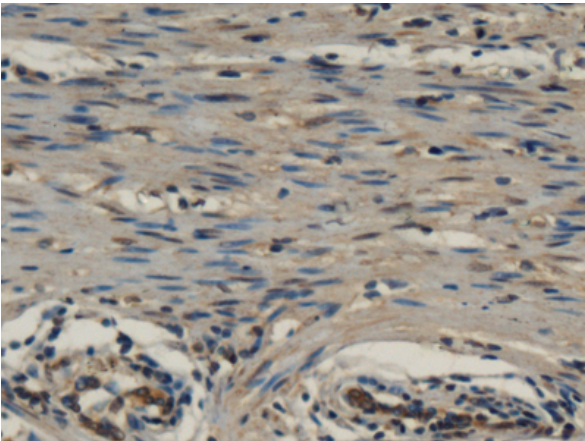
Storage & Shipping: Store at -20°C. Avoid repeated freezing and thawing



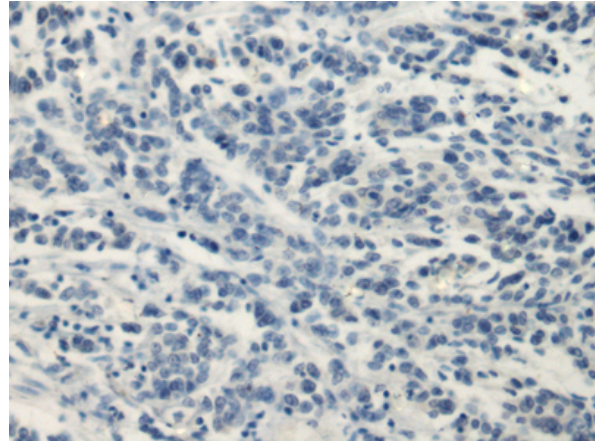
Immunohistochemistry analysis of paraffin embedded Human breast cancer tissue using 219469(IL1RL2 Antibody) at a dilution of 1/180(Cytoplasm).



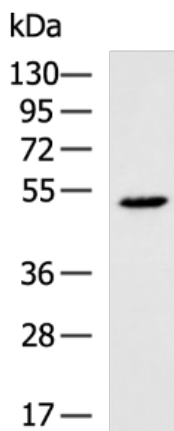
In comparison with the IHC on the left, the same paraffin-embedded Human breast cancer tissue is first treated with the fusion protein and then with 219469(Anti-IL1RL2 Antibody) at dilution 1/180.



The image on the left is immunohistochemistry of paraffin-embedded Human colorectal cancer tissue using 219469(Anti-IL1RL2 Antibody) at a dilution of 1/180.



In comparison with the IHC on the left, the same paraffin-embedded Human colorectal cancer tissue is first treated with fusion protein and then with D227219(Anti-IL1RL2 Antibody) at dilution 1/180.



Gel: 8%SDS-PAGE, Lysate: 40 µg;
Lane: K562 cell lysate;
Primary antibody: 219469(IL1RL2 Antibody) at dilution 1/1000;
Secondary antibody: HRP-conjugated Goat anti rabbit IgG at 1/5000 dilution;
Exposure time: 20 seconds



Product Description

Pioneering GTPase and Oncogene Product Development since 2010
