

IL20RA RABBIT PAB

Cat.#: S210102

Product Name: Anti-IL20RA Rabbit Polyclonal Antibody

Synonyms: IL-20R1; ZCYTOR7

UNIPROT ID: Q9UHF4 (Gene Accession - BC113574)

Background: The protein encoded by this gene is a receptor for interleukin 20 (IL20), a cytokine that may be involved in epidermal function. The receptor of IL20 is a heterodimeric receptor complex consisting of this protein and interleukin 20 receptor beta (IL20B). This gene and IL20B are highly expressed in skin. The expression of both genes is found to be upregulated in Psoriasis.

Immunogen: Fusion protein of human IL20RA

Applications: ELISA, IHC

Recommended Dilutions: IHC: 50-200; ELISA: 2000-5000

Host Species: Rabbit

Clonality: Rabbit Polyclonal

Isotype: Immunogen-specific rabbit IgG

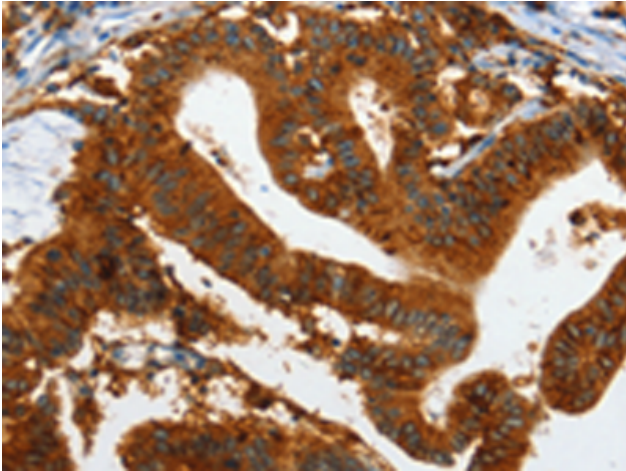
Purification: Antigen affinity purification

Species Reactivity: Human, Mouse

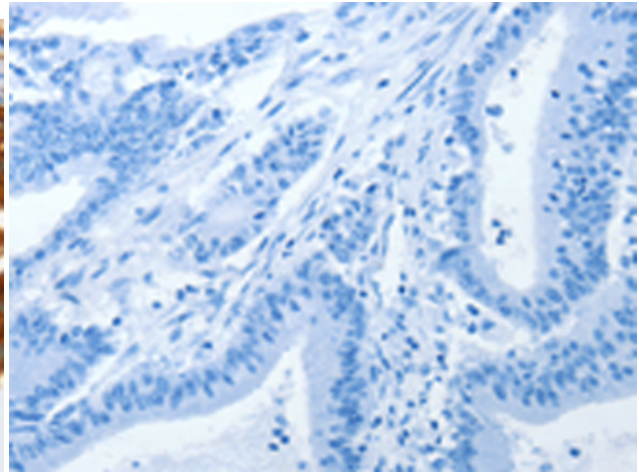
Constituents: PBS (without Mg²⁺ and Ca²⁺), pH 7.4, 150 mM NaCl, 0.05% Sodium Azide and 40% glycerol

Research Areas: Immunology

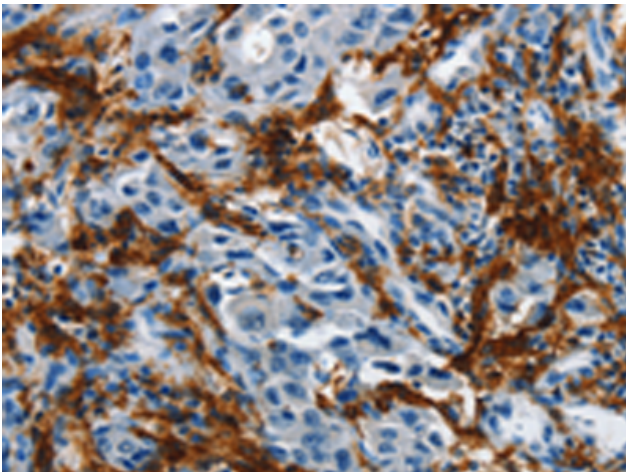
Storage & Shipping: Store at -20°C. Avoid repeated freezing and thawing



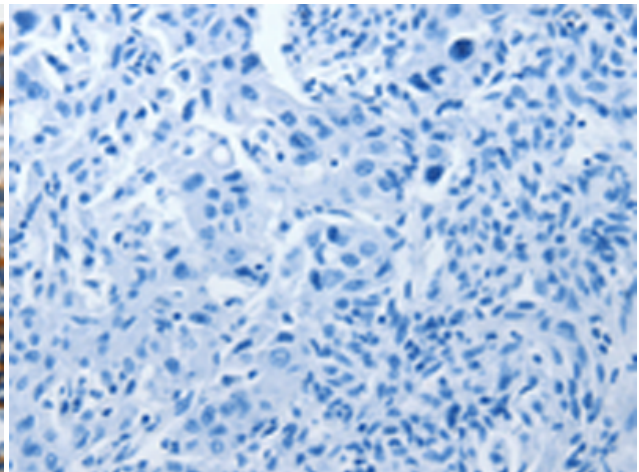
Immunohistochemistry analysis of paraffin embedded Human colon cancer tissue using 210102(IL20RA Antibody) at a dilution of 1/35(Cytoplasm).



In comparison with the IHC on the left, the same paraffin-embedded Human colon cancer tissue is first treated with the fusion protein and then with 210102(Anti-IL20RA Antibody) at dilution 1/35.



The image on the left is immunohistochemistry of paraffin-embedded Human lung cancer tissue using 210102(Anti-IL20RA Antibody) at a dilution of 1/35.



In comparison with the IHC on the left, the same paraffin-embedded Human lung cancer tissue is first treated with fusion protein and then with D120176(Anti-IL20RA Antibody) at dilution 1/35.