

IL23R RABBIT PAB

Cat.#: S216310

Product Name: Anti-IL23R Rabbit Polyclonal Antibody

Synonyms:

UNIPROT ID: Q5VWK5 (Gene Accession - BC040720)

Background: The protein encoded by this gene is a subunit of the receptor for IL23A/IL23. This protein pairs with the receptor molecule IL12RB1/IL12Rbeta1, and both are required for IL23A signaling. This protein associates constitutively with Janus kinase 2 (JAK2), and also binds to transcription activator STAT3 in a ligand-dependent manner.

Immunogen: Fusion protein of human IL23R

Applications: ELISA, WB, IHC

Recommended Dilutions: IHC: 20-May;WB: 500-2000;ELISA: 500-5000

Host Species: Rabbit

Clonality: Rabbit Polyclonal

Isotype: Immunogen-specific rabbit IgG

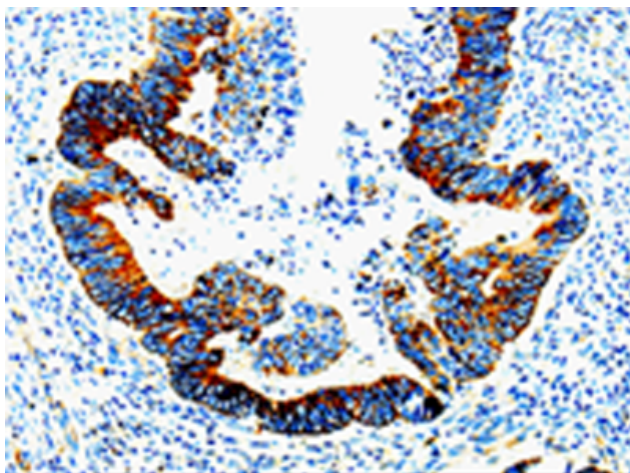
Purification: Antigen affinity purification

Species Reactivity: Human

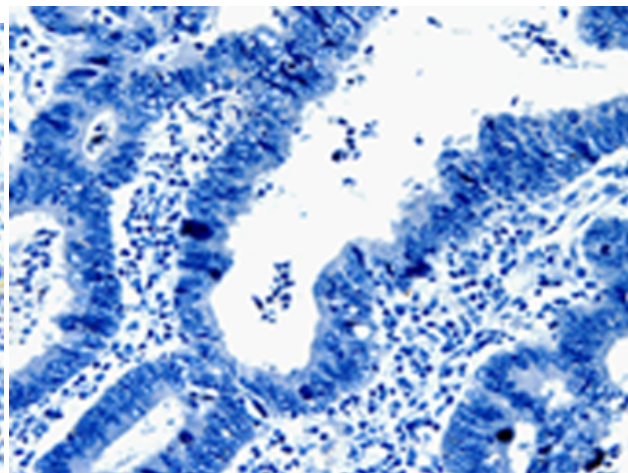
Constituents: PBS (without Mg²⁺ and Ca²⁺), pH 7.4, 150 mM NaCl, 0.05% Sodium Azide and 40% glycerol

Research Areas: Signal Transduction, Epigenetics and Nuclear Signaling, Immunology

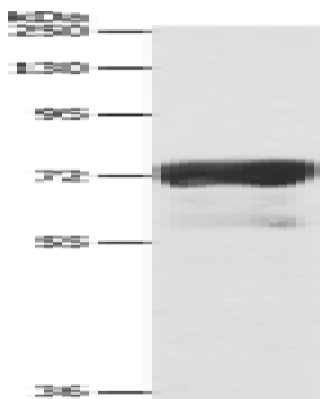
Storage & Shipping: Store at -20°C. Avoid repeated freezing and thawing



Immunohistochemistry analysis of paraffin embedded Human rectal cancer tissue using 216310(IL23R Antibody) at a dilution of 1/10(Cytoplasm).



In comparison with the IHC on the left, the same paraffin-embedded Human rectal cancer tissue is first treated with the fusion protein and then with 216310(Anti-IL23R Antibody) at dilution 1/10.



Gel: 8%SDS-PAGE, Lysate: 40 µg;
Lane: Human sigmoid tissue;
Primary antibody: 216310(IL23R Antibody) at dilution 1/300;
Secondary antibody: Goat anti rabbit IgG at 1/8000 dilution;
Exposure time: 30 seconds