

ILK RABBIT PAB

Cat.#: S216582

Product Name: Anti-ILK Rabbit Polyclonal Antibody

Synonyms: P59; ILK-1; ILK-2; p59ILK

UNIPROT ID: Q13418 (Gene Accession - BC001554)

Background: This gene encodes a protein with a kinase-like domain and four ankyrin-like repeats. The encoded protein associates at the cell membrane with the cytoplasmic domain of beta integrins, where it regulates integrin-mediated signal transduction. Activity of this protein is important in the epithelial to mesenchymal transition, and over-expression of this gene is implicated in tumor growth and metastasis. Alternative splicing results in multiple transcript variants.

Immunogen: Fusion protein of human ILK

Applications: ELISA, WB, IHC

Recommended Dilutions: IHC: 100-300;WB: 500-2000;ELISA: 2000-10000

Host Species: Rabbit

Clonality: Rabbit Polyclonal

Isotype: Immunogen-specific rabbit IgG

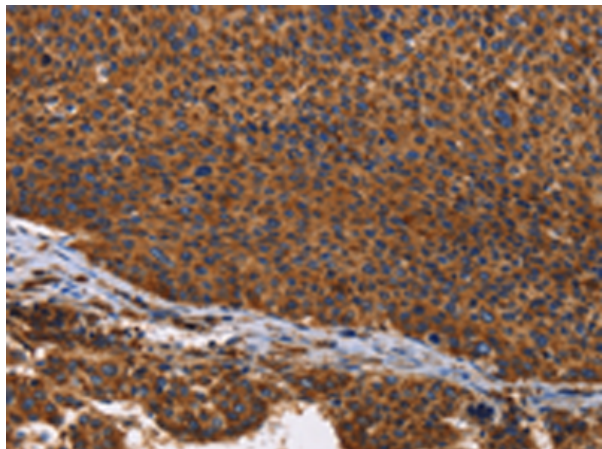
Purification: Antigen affinity purification

Species Reactivity: Human, Mouse, Rat

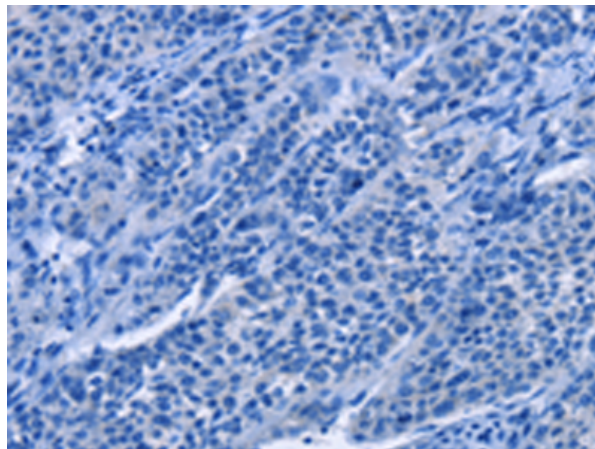
Constituents: PBS (without Mg²⁺ and Ca²⁺), pH 7.4, 150 mM NaCl, 0.05% Sodium Azide and 40% glycerol

Research Areas: Signal Transduction

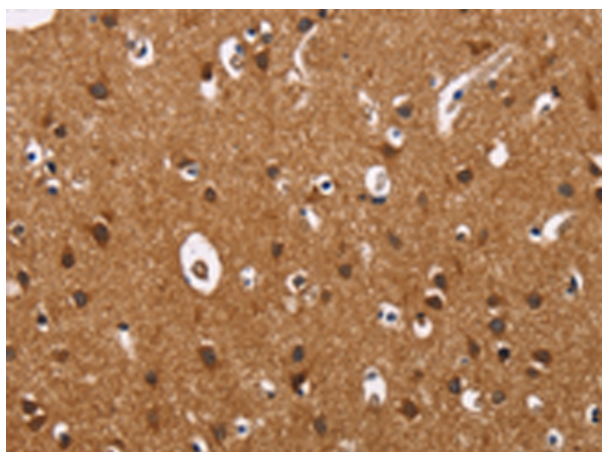
Storage & Shipping: Store at -20°C. Avoid repeated freezing and thawing



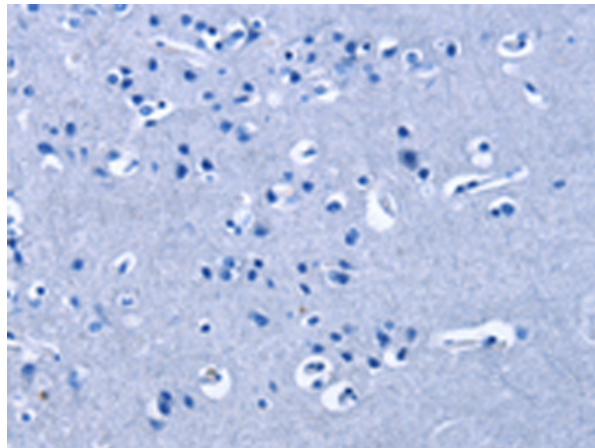
Immunohistochemistry analysis of paraffin embedded Human liver cancer tissue using 216582(ILK Antibody) at a dilution of 1/60(Cytoplasm).



In comparison with the IHC on the left, the same paraffin-embedded Human liver cancer tissue is first treated with the fusion protein and then with 216582(Anti-ILK Antibody) at dilution 1/60.



The image on the left is immunohistochemistry of paraffin-embedded Human brain tissue using 216582(Anti-ILK Antibody) at a dilution of 1/60.



In comparison with the IHC on the left, the same paraffin-embedded Human brain tissue is first treated with fusion protein and then with D220857(Anti-ILK Antibody) at dilution 1/60.



Gel: 8%SDS-PAGE, Lysate: 40 µg;
Lane 1-2: Mouse heart tissue, hela cells;
Primary antibody: 216582(ILK Antibody) at dilution 1/600;
Secondary antibody: Goat anti rabbit IgG at 1/8000 dilution;
Exposure time: 40 seconds

