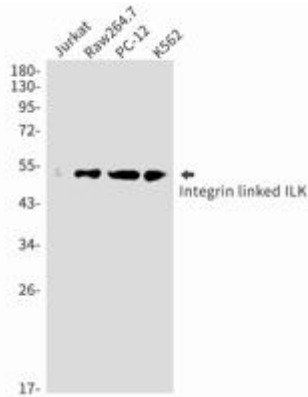


ILK RABBIT PAB**Cat.#:** N226058**Product Name:** Anti-ILK Rabbit pAb**Synonyms:** ILK; ILK1; ILK2; Integrin-linked protein kinase; 59 kDa serine/threonine-protein kinase; ILK-1; ILK-2; p59ILK**UNIPROT ID:** Q13418**Background:** Integrin-linked kinases (ILKs) couple integrins and growth factors to downstream pathways involved in cell survival, cell cycle control, cell-cell adhesion and cell motility. ILK functions as a scaffold bridging the extracellular matrix (ECM) and growth factor receptors to the actin cytoskeleton through interactions with integrin, PINCH (which links ILK to the RTKs via Nck2), CH-ILKBP and affixin.**Immunogen:** A synthetic peptide of human Integrin linked ILK**Applications:** WB, ICC/IF, FC**Recommended Dilutions:** WB: 1/500-1/1000 IF: 1/50-1/200 FC: 1/50-1/100**Host Species:** Rabbit**Clonality:** Rabbit Polyclonal**Clone ID:** -**MW:** Calculated MW: 51 kDa; Observed MW: 51 kDa**Isotype:** IgG**Purification:** Affinity Purified**Species Reactivity:** Human, Mouse, Rat**Conjugation:** Unconjugated**Modification:** Unmodified**Constituents:** PBS (without Mg²⁺ and Ca²⁺), pH 7.3 containing 50% glycerol, 0.5% BSA and 0.02% sodium azide**Research Areas:** Signal Transduction**Storage & Shipping:** Store at -20°C. Avoid repeated freezing and thawing



Western blot analysis of Integrin linked ILK in Jurkat, Raw264.7, PC-12, K562 lysates using ILK antibody.