

## IMPDH2 RABBIT MAB

**Cat.#:** N263385

**Product Name:** Anti-IMPDH2 Rabbit Monoclonal Antibody

**Synonyms:** IMPD2; IMPDH 2; IMPDH II; Impdh2

**UNIPROT ID:** P12268

**Background:** Rate limiting enzyme in the de novo synthesis of guanine nucleotides and therefore is involved in the regulation of cell growth. It may also have a role in the development of malignancy and the growth progression of some tumors.

**Immunogen:** A synthetic peptide of human IMPDH2

**Applications:** WB,IHC-F,IHC-P,ICC/IF,IP

**Recommended Dilutions:** WB: 1/500-1/1000 IHC: 1/50-1/100 IF: 1/50-1/200 IP: 1/20

**Host Species:** Rabbit

**Clonality:** Rabbit Monoclonal

**Clone ID:** R06-1B8

**MW:** Calculated MW: 56 kDa; Observed MW: 56 kDa

**Isotype:** IgG

**Purification:** Affinity Purified

**Species Reactivity:** Human,Mouse,Rat

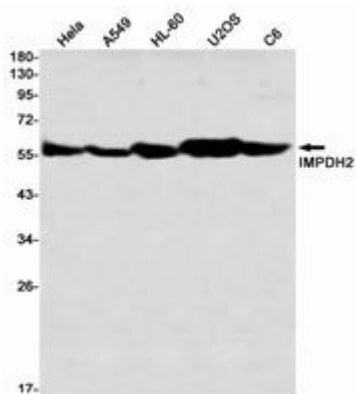
**Conjugation:** Unconjugated

**Modification:** Unmodified

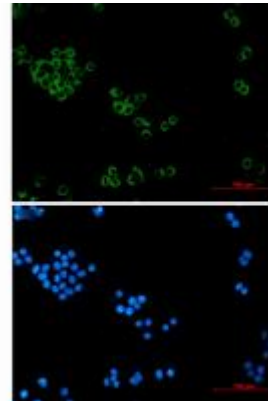
**Constituents:** PBS (without Mg<sup>2+</sup> and Ca<sup>2+</sup>), pH 7.3 containing 50% glycerol, 0.5% BSA and 0.02% sodium azide

**Research Areas:** Signal Transduction

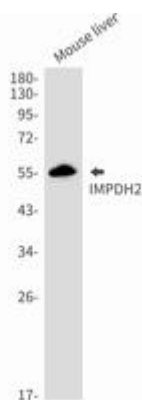
**Storage & Shipping:** Store at -20°C. Avoid repeated freezing and thawing



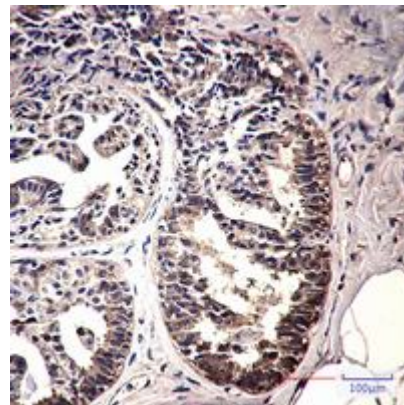
Western blot analysis of IMPDH2 in HeLa, A549, HL-60, U2OS, C6 lysates using IMPDH2 antibody



Immunocytochemistry analysis of IMPDH2 (green) in HeLa using IMPDH2 antibody, and DAPI (blue).



Western blot analysis of IMPDH2 in 3T3, mouse liver lysates using IMPDH2 antibody.



Immunohistochemistry analysis of paraffin-embedded Human breast cancer using IMPDH2 antibody. High-pressure and temperature Sodium Citrate pH 6.0 was used for antigen retrieval.