

IMPORTIN 9 RABBIT MAB

Cat.#: N261574

Product Name: Anti-Importin 9 Rabbit Monoclonal Antibody

Synonyms: importin 9; Imp9; Ran-binding protein 9; RanBP9

UNIPROT ID: Q96P70

Background: Nuclear transport receptor that mediates nuclear import of proteins, such as histones, proteasome and actin.

Immunogen: A synthetic peptide of human Importin 9

Applications: WB, ICC/IF, IP

Recommended Dilutions: WB: 1/500-1/1000 IF: 1/50-1/200 IP: 1/20

Host Species: Rabbit

Clonality: Rabbit Monoclonal

Clone ID: R03-8D9

MW: Calculated MW: 116 kDa; Observed MW: 116 kDa

Isotype: IgG

Purification: Affinity Purified

Species Reactivity: Human

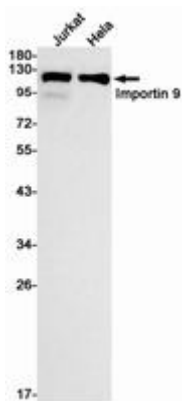
Conjugation: Unconjugated

Modification: Unmodified

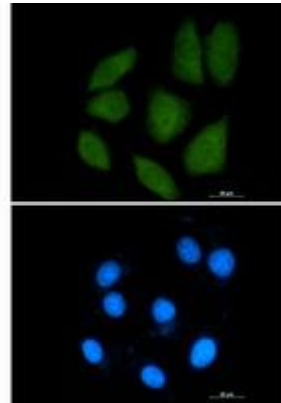
Constituents: PBS (without Mg²⁺ and Ca²⁺), pH 7.3 containing 50% glycerol, 0.5% BSA and 0.02% sodium azide

Research Areas: Signal Transduction

Storage & Shipping: Store at -20°C. Avoid repeated freezing and thawing



Western blot analysis of Importin 9/RANBP9 in Jurkat, HeLa lysates using Importin 9/RANBP9 antibody.



Immunocytochemistry analysis of Importin 9 (green) in A549 using Importin 9 antibody, and DAPI (blue).