

## INDOLEAMINE 2,3-DIOXYGENASE RABBIT MAB

**Cat.#:** N262406

**Product Name:** Anti-Indoleamine 2,3-dioxygenase Rabbit Monoclonal Antibody

**Synonyms:** 3-dioxygenase; IDO 1; IDO; IDO1; INDO; indolamine 2; 3 dioxygenase; Indole 2 3 dioxygenase

**UNIPROT ID:** P14902

**Background:** Catalyzes the cleavage of the pyrrol ring of tryptophan and incorporates both atoms of a molecule of oxygen.

**Immunogen:** Recombinant protein of human Indoleamine 2,3-dioxygenase

**Applications:** WB,IHC-F,IHC-P,ICC/IF,IP

**Recommended Dilutions:** WB: 1/500-1/1000 IHC: 1/50-1/100 IF: 1/50-1/200 IP: 1/20

**Host Species:** Rabbit

**Clonality:** Rabbit Monoclonal

**Clone ID:** R03-5D4

**MW:** Calculated MW: 45 kDa; Observed MW: 45 kDa

**Isotype:** IgG

**Purification:** Affinity Purified

**Species Reactivity:** Human

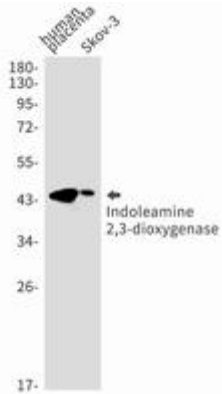
**Conjugation:** Unconjugated

**Modification:** Unmodified

**Constituents:** PBS (without Mg<sup>2+</sup> and Ca<sup>2+</sup>), pH 7.3 containing 50% glycerol, 0.5% BSA and 0.02% sodium azide

**Research Areas:** Signal Transduction

**Storage & Shipping:** Store at -20°C. Avoid repeated freezing and thawing



Western blot analysis of Indoleamine 2, 3-dioxygenase in Human placenta, SKOV-3 lysates using Indoleamine 2, 3-dioxygenase antibody.