

INHA RABBIT PAB

Cat.#: S216584

Product Name: Anti-INHA Rabbit Polyclonal Antibody

Synonyms:

UNIPROT ID: P05111 (Gene Accession - BC006391)

Background: This gene encodes the alpha subunit of inhibins A and B protein complexes. These complexes negatively regulate follicle stimulating hormone secretion from the pituitary gland. Inhibins have also been implicated in regulating numerous cellular processes including cell proliferation, apoptosis, immune response and hormone secretion.

Immunogen: Fusion protein of human INHA

Applications: ELISA, IHC

Recommended Dilutions: IHC: 150-500; ELISA: 1000-5000

Host Species: Rabbit

Clonality: Rabbit Polyclonal

Isotype: Immunogen-specific rabbit IgG

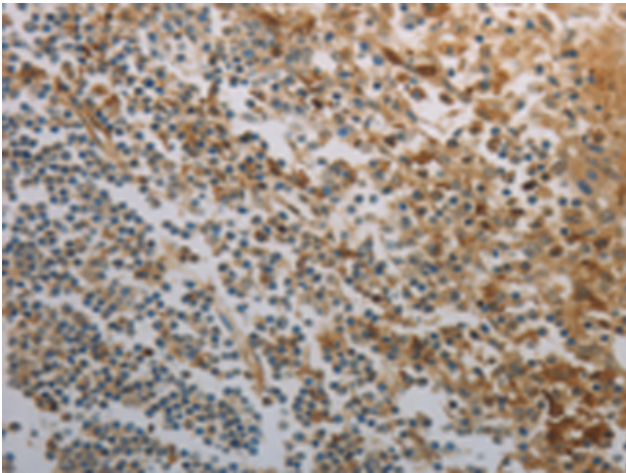
Purification: Antigen affinity purification

Species Reactivity: Human, Mouse, Rat

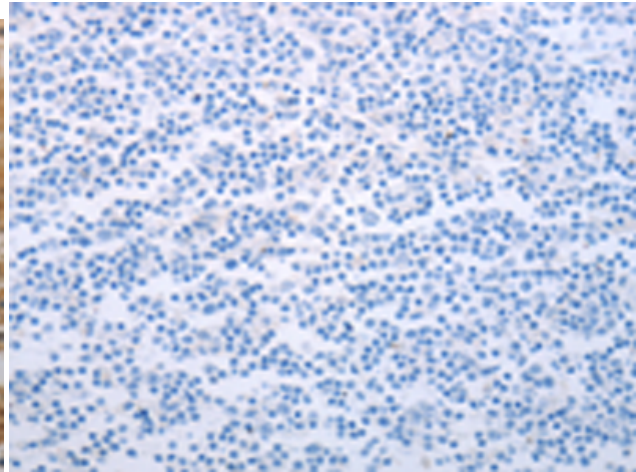
Constituents: PBS (without Mg²⁺ and Ca²⁺), pH 7.4, 150 mM NaCl, 0.05% Sodium Azide and 40% glycerol

Research Areas: Signal Transduction, Cancer

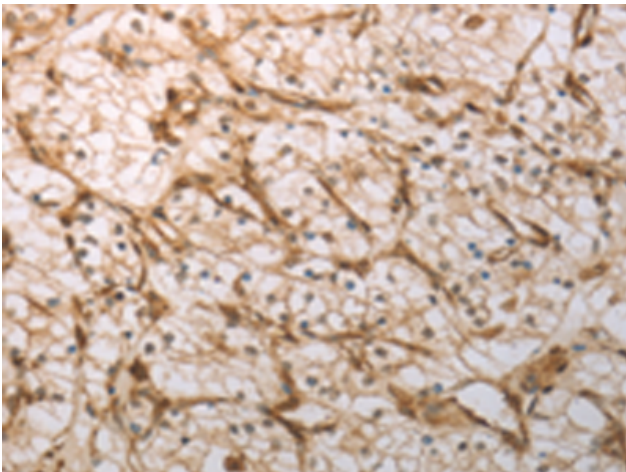
Storage & Shipping: Store at -20°C. Avoid repeated freezing and thawing



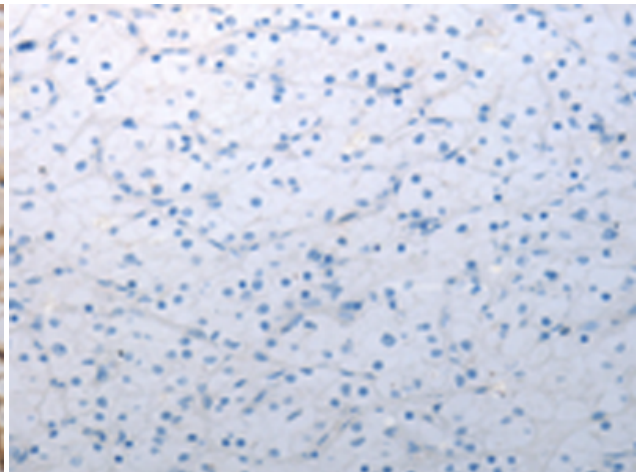
Immunohistochemistry analysis of paraffin embedded Human tonsil tissue using 216584(INHA Antibody) at a dilution of 1/150(Cytoplasm).



In comparison with the IHC on the left, the same paraffin-embedded Human tonsil tissue is first treated with the fusion protein and then with 216584(Anti-INHA Antibody) at dilution 1/150.



The image on the left is immunohistochemistry of paraffin-embedded Human renal cancer tissue using 216584(Anti-INHA Antibody) at a dilution of 1/150.



In comparison with the IHC on the left, the same paraffin-embedded Human renal cancer tissue is first treated with fusion protein and then with D220860(Anti-INHA Antibody) at dilution 1/150.