

INHIBIN BETA E RABBIT PAB

Cat.#: N225015

Product Name: Anti-Inhibin beta E Rabbit pAb

Synonyms: INHBE; Inhibin beta E chain; Activin beta-E chain

UNIPROT ID: P58166

Background: Inhibins and activins inhibit and activate, respectively, the secretion of follitropin by the pituitary gland.

Immunogen: The antiserum was produced against synthesized peptide derived from the C-terminal region of human INHBE. AA range:301-350

Applications: WB,IHC-P,ELISA

Recommended Dilutions: WB: 1/500-1/1000 IHC: 1/50-1/100 ELISA: 1/10000

Host Species: Rabbit

Clonality: Rabbit Polyclonal

Clone ID: -

MW: Calculated MW: 39 kDa; Observed MW: 39 kDa

Isotype: IgG

Purification: Affinity Purified

Species Reactivity: Human,Mouse,Rat

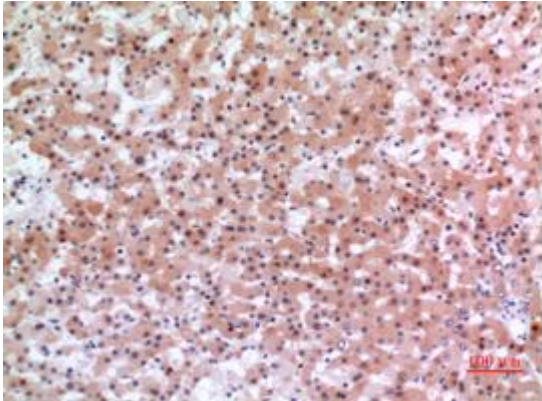
Conjugation: Unconjugated

Modification: Unmodified

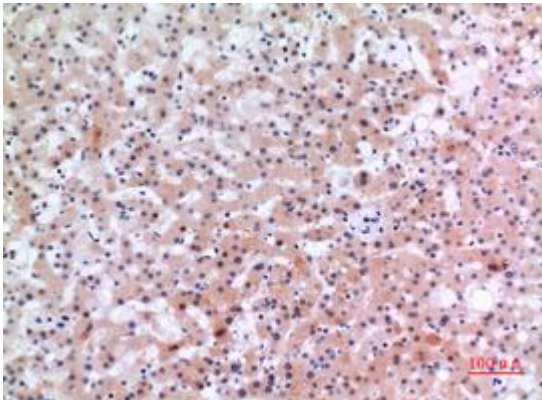
Constituents: PBS (without Mg²⁺ and Ca²⁺), pH 7.3 containing 50% glycerol, 0.5% BSA and 0.02% sodium azide

Research Areas: Signal Transduction

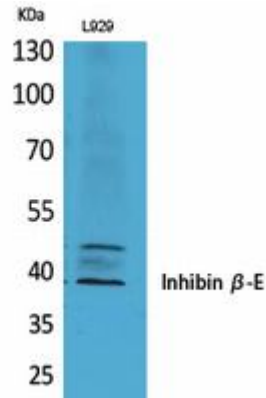
Storage & Shipping: Store at -20°C. Avoid repeated freezing and thawing



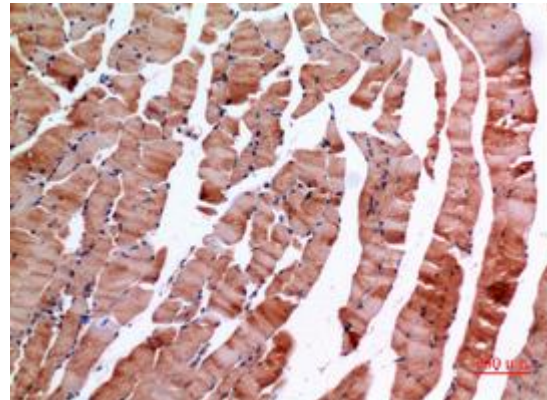
Immunohistochemistry analysis of paraffin-embedded Human liver using Inhibin beta E antibody. High-pressure and temperature Sodium Citrate pH 6.0 was used for antigen retrieval.



Immunohistochemistry analysis of paraffin-embedded Human liver using Inhibin beta E antibody. High-pressure and temperature Sodium Citrate pH 6.0 was used for antigen retrieval.



Western blot analysis of Inhibin beta E in L929 lysates using Inhibin beta E antibody.



Immunohistochemistry analysis of paraffin-embedded mouse muscle using Inhibin beta E antibody. High-pressure and temperature Sodium Citrate pH 6.0 was used for antigen retrieval.