

INPP1 RABBIT PAB

Cat.#: S218681

Product Name: Anti-INPP1 Rabbit Polyclonal Antibody

Synonyms:

UNIPROT ID: P49441 (Gene Accession - BC015496)

Background: This gene encodes the enzyme inositol polyphosphate-1-phosphatase, one of the enzymes involved in phosphatidylinositol signaling pathways. This enzyme removes the phosphate group at position 1 of the inositol ring from the polyphosphates inositol 1,4-bisphosphate and inositol 1,3,4-trisphosphate.

Immunogen: Fusion protein of human INPP1

Applications: ELISA, WB, IHC

Recommended Dilutions: IHC: 40-200;WB: 500-2000;ELISA: 5000-10000

Host Species: Rabbit

Clonality: Rabbit Polyclonal

Isotype: Immunogen-specific rabbit IgG

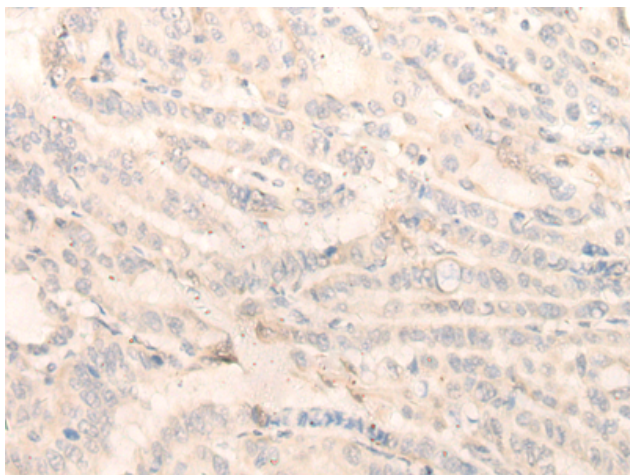
Purification: Antigen affinity purification

Species Reactivity: Human

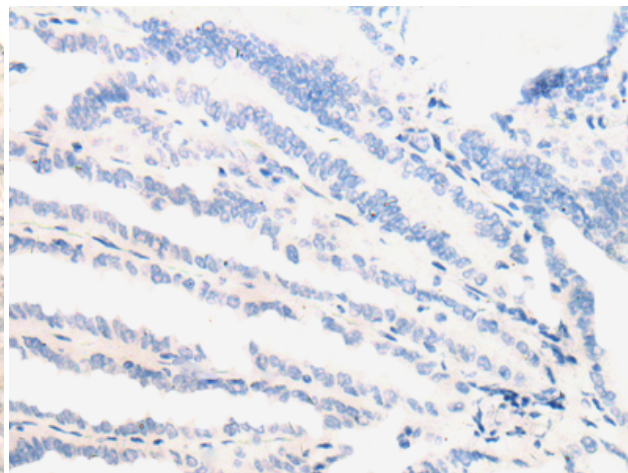
Constituents: PBS (without Mg²⁺ and Ca²⁺), pH 7.4, 150 mM NaCl, 0.05% Sodium Azide and 40% glycerol

Research Areas: Signal Transduction

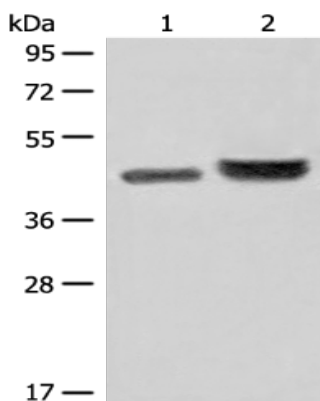
Storage & Shipping: Store at -20°C. Avoid repeated freezing and thawing



Immunohistochemistry analysis of paraffin embedded Human thyroid cancer tissue using 218681 (INPP1 Antibody) at a dilution of 1/35 (Cytoplasm).



In comparison with the IHC on the left, the same paraffin-embedded Human thyroid cancer tissue is first treated with the fusion protein and then with 218681 (Anti-INPP1 Antibody) at dilution 1/35.



Gel: 8% SDS-PAGE, Lysate: 40 μ g;
 Lane 1-2: 231 cell and Human fetal liver tissue lysates;
 Primary antibody: 218681 (INPP1 Antibody) at dilution 1/500;
 Secondary antibody: Goat anti rabbit IgG at 1/8000 dilution;
 Exposure time: 1 minute