

## INPP4A RABBIT PAB

**Cat.#:** S218934

**Product Name:** Anti-INPP4A Rabbit Polyclonal Antibody

**Synonyms:** INPP4; TVAS1

**UNIPROT ID:** Q96PE3 (Gene Accession - BC028361 )

**Background:** This gene encodes an Mg<sup>++</sup> independent enzyme that hydrolyzes the 4-position phosphate from the inositol ring of phosphatidylinositol 3,4-bisphosphate, inositol 1,3,4-trisphosphate, and inositol 3,4-bisphosphate. Multiple transcript variants encoding distinct isoforms have been described.

**Immunogen:** Fusion protein of human INPP4A

**Applications:** ELISA, IHC

**Recommended Dilutions:** IHC: 50-200; ELISA: 5000-10000

**Host Species:** Rabbit

**Clonality:** Rabbit Polyclonal

**Isotype:** Immunogen-specific rabbit IgG

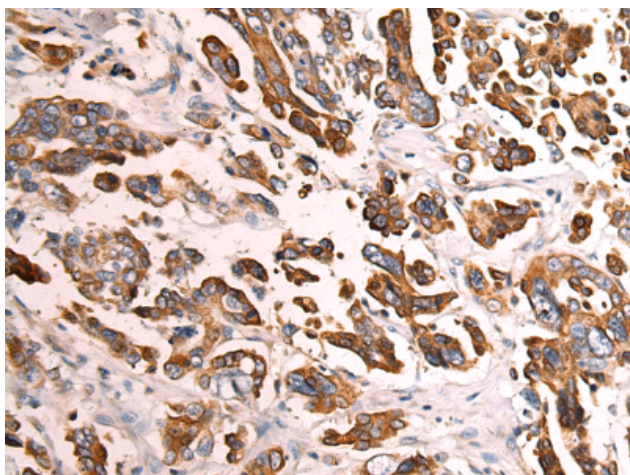
**Purification:** Antigen affinity purification

**Species Reactivity:** Human, Mouse, Rat

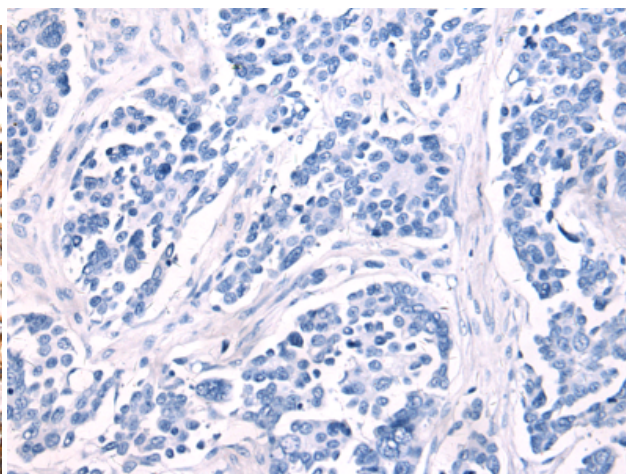
**Constituents:** PBS (without Mg<sup>2+</sup> and Ca<sup>2+</sup>), pH 7.4, 150 mM NaCl, 0.05% Sodium Azide and 40% glycerol

**Research Areas:** Signal Transduction

**Storage & Shipping:** Store at -20°C. Avoid repeated freezing and thawing



Immunohistochemistry analysis of paraffin embedded Human colorectal cancer tissue using 218934 (INPP4A Antibody) at a dilution of 1/100 (Cytoplasm and Nucleus).



In comparison with the IHC on the left, the same paraffin-embedded Human colorectal cancer tissue is first treated with the fusion protein and then with 218934 (Anti-INPP4A Antibody) at dilution 1/100.