

INSM2 RABBIT PAB

Cat.#: S222230

Product Name: Anti-INSM2 Rabbit Polyclonal Antibody

Synonyms: IA6; IA-6; mlt1

UNIPROT ID: Q96T92 (Gene Accession - NP_115983)

Background: May function as a growth suppressor or tumor suppressor in liver cells and in certain neurons.

Immunogen: Synthetic peptide of human INSM2

Applications: ELISA, IHC

Recommended Dilutions: IHC: 30-150; ELISA: 5000-10000

Host Species: Rabbit

Clonality: Rabbit Polyclonal

Isotype: Immunogen-specific rabbit IgG

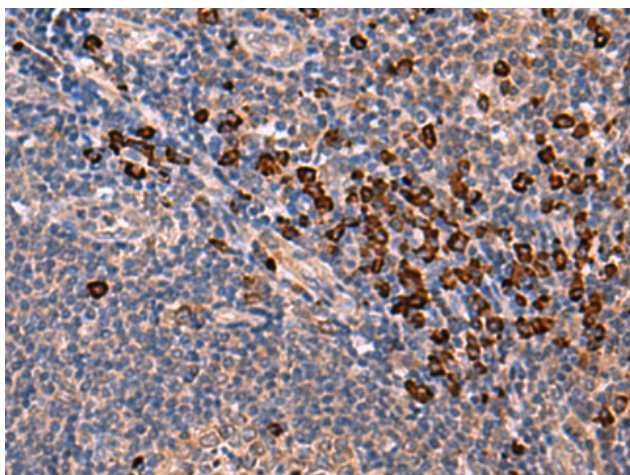
Purification: Antigen affinity purification

Species Reactivity: Human

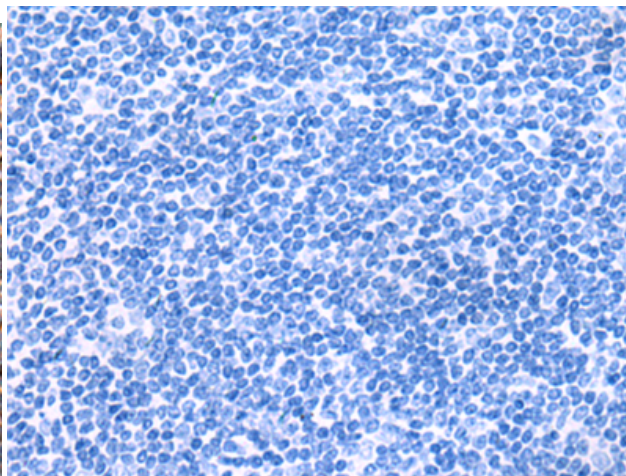
Constituents: PBS (without Mg²⁺ and Ca²⁺), pH 7.4, 150 mM NaCl, 0.05% Sodium Azide and 40% glycerol

Research Areas: Epigenetics and Nuclear Signaling

Storage & Shipping: Store at -20°C. Avoid repeated freezing and thawing



Immunohistochemistry analysis of paraffin embedded Human tonsil tissue using 222230 (INSM2 Antibody) at a dilution of 1/35 (Cytoplasm).



In comparison with the IHC on the left, the same paraffin-embedded Human tonsil tissue is first treated with the synthetic peptide and then with 222230 (Anti-INSM2 Antibody) at dilution 1/35.