

INSULIN DEGRADING ENZYME RABBIT MAB

Cat.#: N263625

Product Name: Anti-Insulin Degrading Enzyme Rabbit Monoclonal Antibody

Synonyms: INSULYSIN; Insulin degrading enzyme; IDE

UNIPROT ID: P14735

Background: This gene encodes a zinc metallopeptidase that degrades intracellular insulin, and thereby terminates insulin's activity, as well as participating in intercellular peptide signalling by degrading diverse peptides such as glucagon, amylin, bradykinin, and kallidin. The preferential affinity of this enzyme for insulin results in insulin-mediated inhibition of the degradation of other peptides such as beta-amyloid.

Immunogen: A synthesized peptide derived from human IDE

Applications: WB, IHC-P

Recommended Dilutions: WB: 1/500-1/1000 IHC: 1/50-1/100

Host Species: Rabbit

Clonality: Rabbit Monoclonal

Clone ID: R07-6D3

MW: Calculated MW: 118 kDa; Observed MW: 118 kDa

Isotype: IgG

Purification: Affinity Purified

Species Reactivity: Human

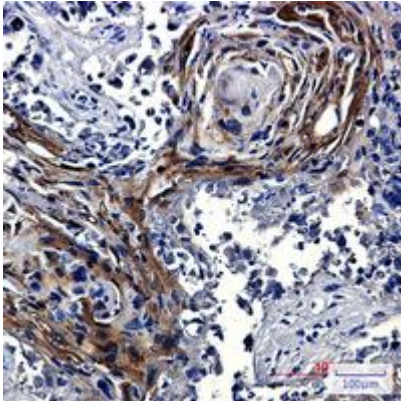
Conjugation: Unconjugated

Modification: Unmodified

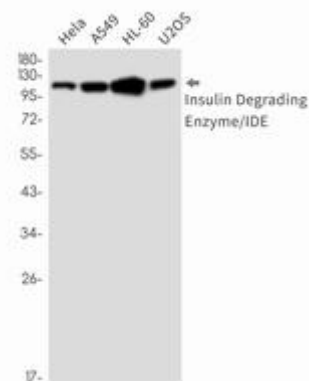
Constituents: PBS (without Mg²⁺ and Ca²⁺), pH 7.3 containing 50% glycerol, 0.5% BSA and 0.02% sodium azide

Research Areas: Neuroscience

Storage & Shipping: Store at -20°C. Avoid repeated freezing and thawing



Immunohistochemistry analysis of paraffin-embedded Human lung cancer using Insulin Degrading Enzyme/IDE antibody. High-pressure and temperature Sodium Citrate pH 6.0 was used for antigen retrieval.



Western blot analysis of Insulin Degrading Enzyme/IDE in Hela, A549, HL-60, U2OS lysates using Insulin Degrading Enzyme antibody.