

INSULIN DEGRADING ENZYME RABBIT PAB

Cat.#: N225766

Product Name: Anti-Insulin Degrading Enzyme Rabbit pAb

Synonyms: INSULYSIN; Insulin degrading enzyme; IDE

UNIPROT ID: P14735

Background: This gene encodes a zinc metallopeptidase that degrades intracellular insulin, and thereby terminates insulin's activity, as well as participating in intercellular peptide signalling by degrading diverse peptides such as glucagon, amylin, bradykinin, and kallidin. The preferential affinity of this enzyme for insulin results in insulin-mediated inhibition of the degradation of other peptides such as beta-amyloid.

Immunogen: A synthesized peptide derived from human IDE

Applications: WB, IHC-P

Recommended Dilutions: WB: 1/500-1/1000 IHC: 1/50-1/100

Host Species: Rabbit

Clonality: Rabbit Polyclonal

Clone ID: -

MW: Calculated MW: 118 kDa; Observed MW: 118 kDa

Isotype: IgG

Purification: Affinity Chromatography

Species Reactivity: Human, Mouse, Rat

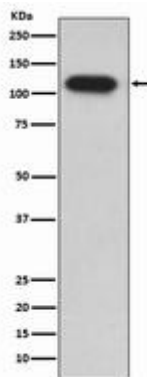
Conjugation: Unconjugated

Modification: Unmodified

Constituents: PBS (without Mg²⁺ and Ca²⁺), pH 7.3 containing 50% glycerol, 0.5% BSA and 0.02% sodium azide

Research Areas: Neuroscience

Storage & Shipping: Store at -20°C. Avoid repeated freezing and thawing



Western blot analysis of IDE in HepG2 lysates using Insulin Degrading Enzyme antibody.