

## INSULIN RABBIT PAB

**Cat.#:** N225223

**Product Name:** Anti-Insulin Rabbit pAb

**Synonyms:** Insulin [Cleaved into: Insulin B chain; Insulin A chain]

**UNIPROT ID:** P01308

**Background:** Insulin decreases blood glucose concentration. It increases cell permeability to monosaccharides, amino acids and fatty acids. It accelerates glycolysis, the pentose phosphate cycle, and glycogen synthesis in liver.

**Immunogen:** Synthetic peptide from human protein at AA range: 30-70

**Applications:** IHC-P,ELISA

**Recommended Dilutions:** IHC: 1/50-1/100 ELISA: 1/10000

**Host Species:** Rabbit

**Clonality:** Rabbit Polyclonal

**Clone ID:** -

**MW:** -

**Isotype:** IgG

**Purification:** Affinity Purified

**Species Reactivity:** Human,Mouse,Rat

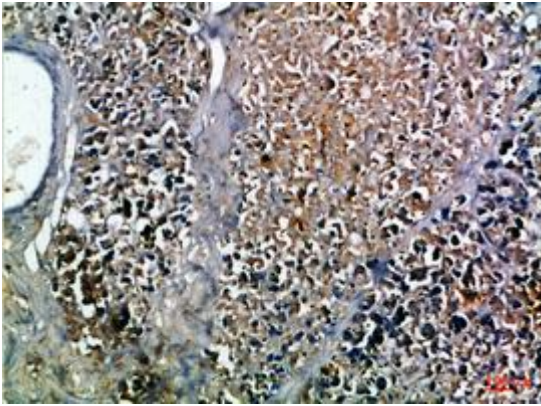
**Conjugation:** Unconjugated

**Modification:** Unmodified

**Constituents:** PBS (without Mg<sup>2+</sup> and Ca<sup>2+</sup>), pH 7.3 containing 50% glycerol, 0.5% BSA and 0.02% sodium azide

**Research Areas:** Signal Transduction

**Storage & Shipping:** Store at -20°C. Avoid repeated freezing and thawing



Immunohistochemistry analysis of paraffin-embedded Human pancreas using Insulin antibody. High-pressure and temperature Sodium Citrate pH 6.0 was used for antigen retrieval.