

INTEGRIN ALPHA 4 RABBIT PAB

Cat.#: N225069

Product Name: Anti-Integrin alpha 4 Rabbit pAb

Synonyms: ITGAD; Integrin alpha-D; ADB2; CD11 antigen-like family member D; Leukointegrin alpha D; CD11d

UNIPROT ID: Q13349

Background: Integrin alpha-D/beta-2 is a receptor for ICAM3 and VCAM1.

Immunogen: The antiserum was produced against synthesized peptide derived from the Internal region of human ITGAD. AA range:901-950

Applications: WB,IHC-P,ELISA

Recommended Dilutions: WB: 1/500-1/1000 IHC: 1/50-1/100 ELISA: 1/10000

Host Species: Rabbit

Clonality: Rabbit Polyclonal

Clone ID: -

MW: Calculated MW: 127 kDa; Observed MW: 127 kDa

Isotype: IgG

Purification: Affinity Purified

Species Reactivity: Human

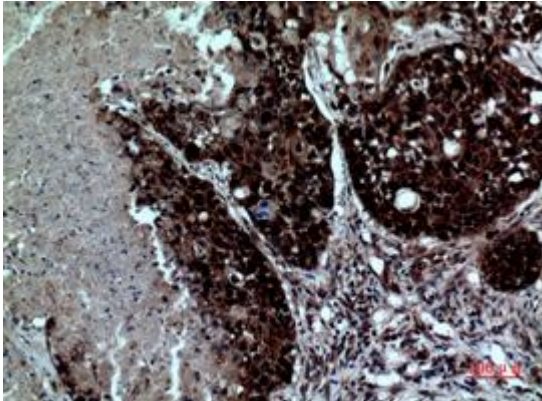
Conjugation: Unconjugated

Modification: Unmodified

Constituents: PBS (without Mg²⁺ and Ca²⁺), pH 7.3 containing 50% glycerol, 0.5% BSA and 0.02% sodium azide

Research Areas: Immunology

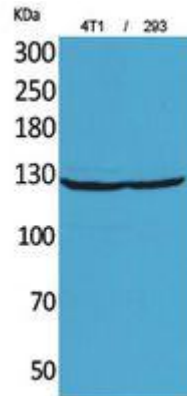
Storage & Shipping: Store at -20°C. Avoid repeated freezing and thawing



Immunohistochemistry analysis of paraffin-embedded Human lung using Integrin alpha 4 antibody. High-pressure and temperature Sodium Citrate pH 6.0 was used for antigen retrieval.



Immunohistochemistry analysis of paraffin-embedded Human spleen using Integrin alpha 4 antibody. High-pressure and temperature Sodium Citrate pH 6.0 was used for antigen retrieval.



Western blot analysis of Integrin alpha 4 in 4T1 293 lysates using Integrin alpha 4 antibody.