

INTEGRIN ALPHA 4 RABBIT PAB

Cat.#: N225007

Product Name: Anti-Integrin alpha 4 Rabbit pAb

Synonyms: ITGA4; CD49D; Integrin alpha-4; CD49 antigen-like family member D; Integrin alpha-IV; VLA-4 subunit alpha; CD49d

UNIPROT ID: P13612

Background: ITGA4 Integrins alpha-4/beta-1 (VLA-4) and alpha-4/beta-7 are receptors for fibronectin. They recognize one or more domains within the alternatively spliced CS-1 and CS-5 regions of fibronectin. They are also receptors for VCAM1. Integrin alpha- 4/beta-1 recognizes the sequence Q-I-D-S in VCAM1.

Immunogen: The antiserum was produced against synthesized peptide derived from the Internal region of human ITGA4. AA range:571-620

Applications: WB,IHC-P,ELISA

Recommended Dilutions: WB: 1/500-1/1000 IHC: 1/50-1/100 ELISA: 1/10000

Host Species: Rabbit

Clonality: Rabbit Polyclonal

Clone ID: -

MW: Calculated MW: 115 kDa; Observed MW: 120 kDa

Isotype: IgG

Purification: Affinity Purified

Species Reactivity: Human,Mouse,Rat

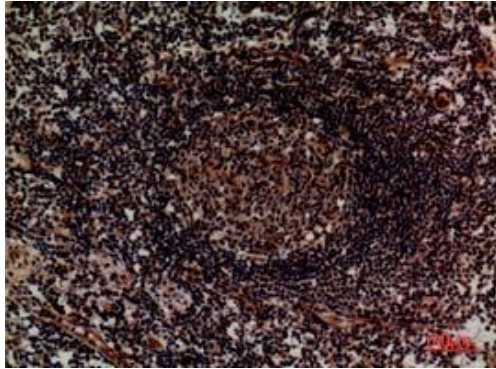
Conjugation: Unconjugated

Modification: Unmodified

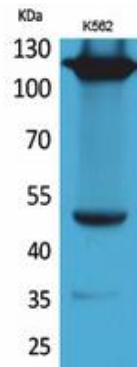
Constituents: PBS (without Mg²⁺ and Ca²⁺), pH 7.3 containing 50% glycerol, 0.5% BSA and 0.02% sodium azide

Research Areas: Signal Transduction

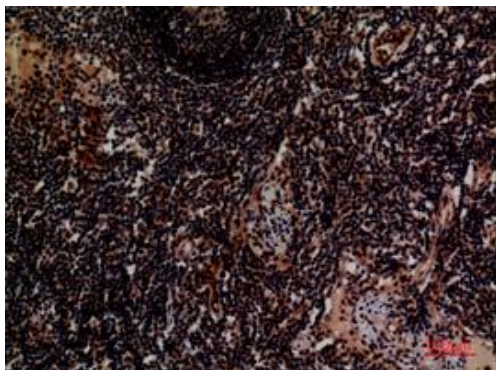
Storage & Shipping: Store at -20°C. Avoid repeated freezing and thawing



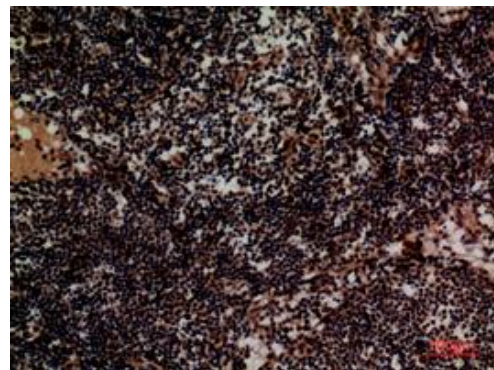
Immunohistochemistry analysis of paraffin-embedded Human lymph using Integrin alpha 4 antibody. High-pressure and temperature Sodium Citrate pH 6.0 was used for antigen retrieval.



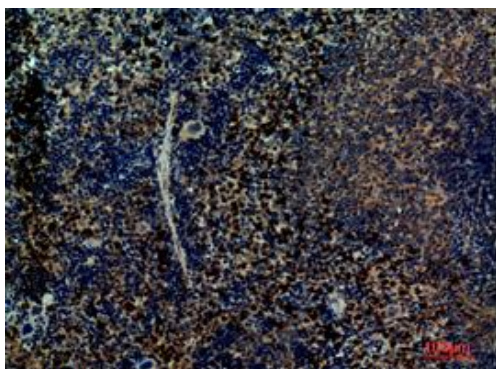
Western blot analysis of Integrin alpha 4 in K562 lysates using Integrin alpha 4 antibody.



Immunohistochemistry analysis of paraffin-embedded Human lymph using Integrin alpha 4 antibody. High-pressure and temperature Sodium Citrate pH 6.0 was used for antigen retrieval.



Immunohistochemistry analysis of paraffin-embedded Human lymph using Integrin alpha 4 antibody. High-pressure and temperature Sodium Citrate pH 6.0 was used for antigen retrieval.



Immunohistochemistry analysis of paraffin-embedded mouse spleen using Integrin alpha 4 antibody. High-pressure and temperature Sodium Citrate pH 6.0 was used for antigen retrieval.



Product Description

Pioneering GTPase and Oncogene Product Development since 2010
