

## INTEGRIN BETA 1 RABBIT PAB

**Cat.#:** N225624

**Product Name:** Anti-Integrin beta 1 Rabbit pAb

**Synonyms:** ITGB1; FN1; FNR1; MDFA; MSK1; Integrin beta-1; Fibronectin receptor subunit beta; VLA-4 subunit beta; CD antigen CD29

**UNIPROT ID:** P05556

**Background:** Integrins are  $\alpha/\beta$  heterodimeric cell surface receptors that play a pivotal role in cell adhesion and migration, as well as in growth and survival. The integrin family contains at least 18  $\alpha$  and 8  $\beta$  subunits that form 24 known integrins with distinct tissue distribution and overlapping ligand specificities.

**Immunogen:** A synthesized peptide derived from human Integrin beta 1

**Applications:** WB, IHC-P

**Recommended Dilutions:** WB: 1/500-1/1000 IHC: 1/50-1/100

**Host Species:** Rabbit

**Clonality:** Rabbit Polyclonal

**Clone ID:** -

**MW:** Calculated MW: 88 kDa; Observed MW: 140 kDa

**Isotype:** IgG

**Purification:** Affinity Chromatography

**Species Reactivity:** Human, Mouse, Rat

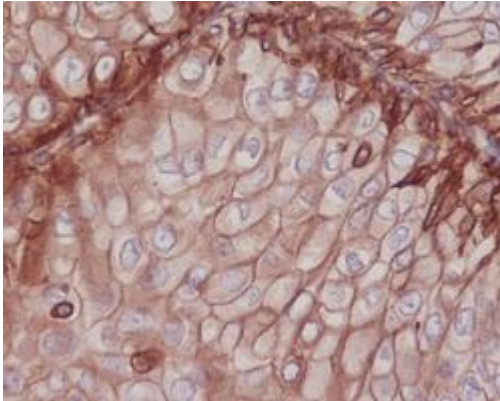
**Conjugation:** Unconjugated

**Modification:** Unmodified

**Constituents:** PBS (without  $Mg^{2+}$  and  $Ca^{2+}$ ), pH 7.3 containing 50% glycerol, 0.5% BSA and 0.02% sodium azide

**Research Areas:** Neuroscience

**Storage & Shipping:** Store at  $-20^{\circ}C$ . Avoid repeated freezing and thawing



Immunohistochemistry analysis of paraffin-embedded Human breast cancer using Integrin beta 1 antibody. High-pressure and temperature Sodium Citrate pH 6.0 was used for antigen retrieval.



Western blot analysis of Integrin beta 1 in A431 lysates using Integrin beta 1 antibody.