

INTEGRIN BETA 6 RABBIT MAB

Cat.#: N262427

Product Name: Anti-Integrin beta 6 Rabbit Monoclonal Antibody

Synonyms: AIH; Integrin beta-6

UNIPROT ID: P18564

Background: This gene encodes a protein that is a member of the integrin superfamily. Members of this family are adhesion receptors that function in signaling from the extracellular matrix to the cell. Integrins are heterodimeric integral membrane proteins composed of an alpha chain and a beta chain. The encoded protein forms a dimer with an alpha v chain and this heterodimer can bind to ligands like fibronectin and transforming growth factor beta 1. Alternate splicing results in multiple transcript variants.

Immunogen: A synthetic peptide of human ITGB6

Applications: WB,IP

Recommended Dilutions: WB: 1/500-1/1000 IP: 1/20

Host Species: Rabbit

Clonality: Rabbit Monoclonal

Clone ID: R04-6E9

MW: Calculated MW: 86 kDa; Observed MW: 86 kDa

Isotype: IgG

Purification: Affinity Purified

Species Reactivity: Human,Mouse,Rat

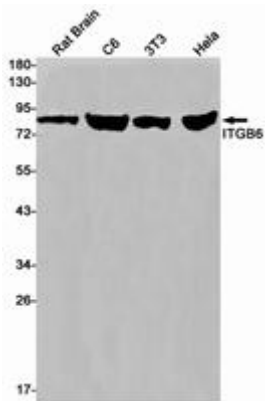
Conjugation: Unconjugated

Modification: Unmodified

Constituents: PBS (without Mg²⁺ and Ca²⁺), pH 7.3 containing 50% glycerol, 0.5% BSA and 0.02% sodium azide

Research Areas: Signal Transduction

Storage & Shipping: Store at -20°C. Avoid repeated freezing and thawing



Western blot analysis of ITGB6 in rat Brain, C6, 3T3, HeLa lysates using Integrin beta 6 antibody.