

## INTEGRIN BETA 7 RABBIT PAB

**Cat.#:** N225229

**Product Name:** Anti-Integrin beta 7 Rabbit pAb

**Synonyms:** Integrin beta-7 (Gut homing receptor beta subunit)

**UNIPROT ID:** P26010

**Background:** Integrin alpha-4/beta-7 (Peyer patches-specific homing receptor LPAM-1) is an adhesion molecule that mediates lymphocyte migration and homing to gut-associated lymphoid tissue (GALT).

**Immunogen:** Synthesized peptide derived from human Integrin  $\beta$ 7. at AA range: 671-720

**Applications:** WB,ELISA

**Recommended Dilutions:** WB: 1/500-1/1000 ELISA: 1/10000

**Host Species:** Rabbit

**Clonality:** Rabbit Polyclonal

**Clone ID:** -

**MW:** Calculated MW: 87 kDa; Observed MW: 130 kDa

**Isotype:** IgG

**Purification:** Affinity Purified

**Species Reactivity:** Human,Mouse

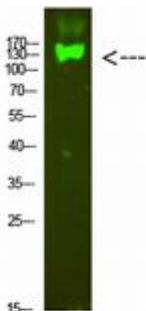
**Conjugation:** Unconjugated

**Modification:** Unmodified

**Constituents:** PBS (without  $Mg^{2+}$  and  $Ca^{2+}$ ), pH 7.3 containing 50% glycerol, 0.5% BSA and 0.02% sodium azide

**Research Areas:** Signal Transduction

**Storage & Shipping:** Store at  $-20^{\circ}C$ . Avoid repeated freezing and thawing



Western blot analysis of Integrin beta 7 in mouse heart lysates using Integrin beta 7 antibody.



# Product Description

Pioneering GTPase and Oncogene Product Development since 2010

---